

# Make Your House Stand Out.

Designer awnings for windows

***markilux***

safe timeless beautiful







## Daylight makes you happy.

Natural light and the sun's rays enrich your life in a way that little else can. No artificial light source comes close. But, depending on the sun's elevation and the season, sometimes we can have too much of a good thing. markilux offers various means to use natural light from outside to influence the atmosphere in a room. Allow yourself to be inspired by our ideas and discover the ways you can create an ambience of wonderfully natural light and maximum living comfort in your own home, protected from the prying eyes of those outside. We are convinced you will be absolutely delighted with the options available.

***markilux***

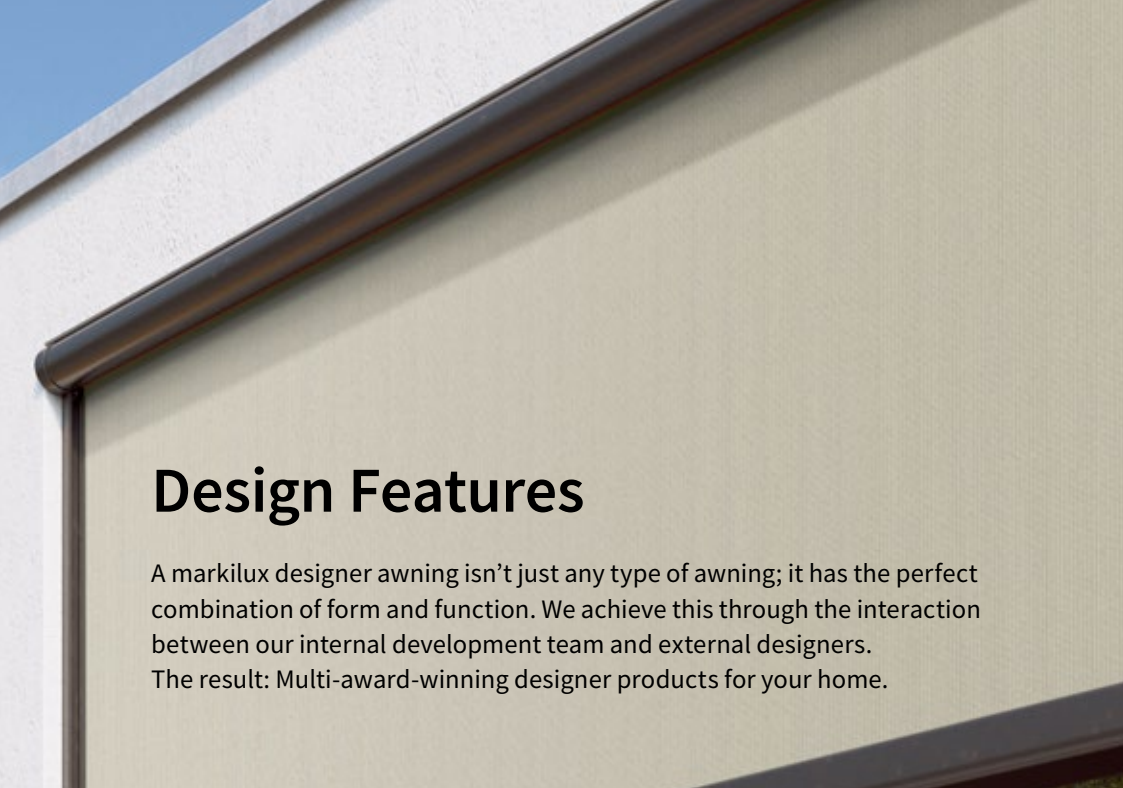
# Award-winning German Design.

**markilux designer awnings “Made in Germany”** As a family business in the 4th generation we have been manufacturing awnings that set the highest of standards for almost 50 years. What makes markilux unique is the combination of designer quality awnings and the weaving of our awning covers all being done under one roof, which is why we are truly “Made in Germany” right down to the last detail. Our originality shows when it comes to making living outdoors even more enticing. We don’t stop at good solutions; we look to improve on these solutions every day. This allows us to offer the best to our customers in every respect – a perfect combination of form and function.

markilux designer awnings are characterised by quality, multi-award-winning designs and innovative technology and turn your favourite spot to relax into something extra special. You can take our word for it with our markilux quality promise.

markilux designer awnings have received a multitude of awards:





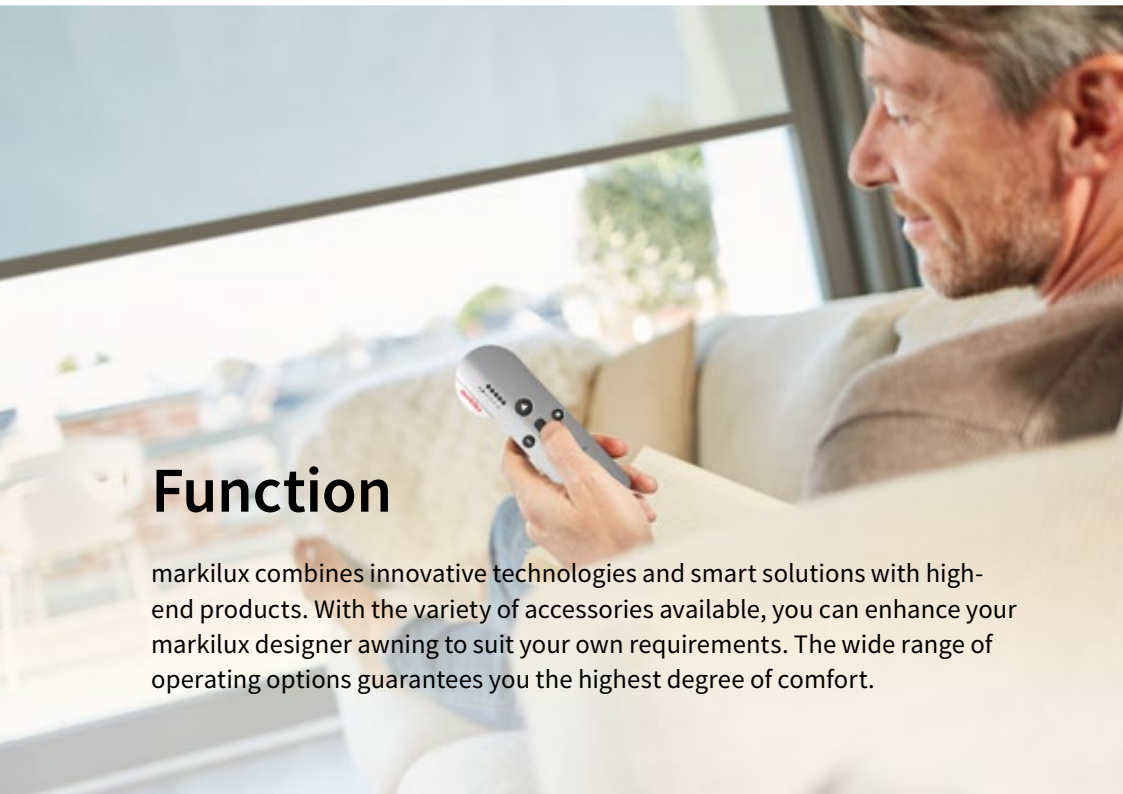
## Design Features

A markilux designer awning isn't just any type of awning; it has the perfect combination of form and function. We achieve this through the interaction between our internal development team and external designers. The result: Multi-award-winning designer products for your home.



## Quality

Every detail is important during the production of our designer awnings. High-grade materials and our comprehensive quality management system ensure that each awning will have an extremely long service life. markilux is certified according to the DIN EN ISO 9001 standard and with this we pursue one objective: The satisfaction of our customers.



## Function

markilux combines innovative technologies and smart solutions with high-end products. With the variety of accessories available, you can enhance your markilux designer awning to suit your own requirements. The wide range of operating options guarantees you the highest degree of comfort.



## Service

Our products, combined with the competent advice of our specialists and their professional installation, make the perfect solution. Our network of qualified specialist retailers guarantees you excellent personal service and that there is always someone at hand to answer any questions you may have.



# Enjoy the interplay of light and shade.

**Textile shading provides increased living comfort** markilux designer blinds and awnings for windows offer numerous advantages in comparison with standard shading systems. They offer effective protection against the often blinding rays of the sun and prevent the room from heating up so maintaining a pleasant living environment. markilux designer awnings immerse your room in softly adjusted daylight without blocking out the sun entirely. Semi-transparent awning fabrics allow a clear view outside whilst shielding you from prying eyes. Ease of operation or integration into a home automation system is a given at markilux.



**Effective solar protection** markilux window blinds provide optimum UV protection and convert the sun's sometimes blinding rays into soft ambient lighting.



**Optimum protection from prying eyes** Enjoy an unobstructed view outside yet maintain the privacy of your own four walls.



**Models and options** As individual as your desires: Choose the markilux with style and accessories that matches your home.

***markilux***





# Your own personal sunshine.

**Added quality of life** markilux designer blinds ensure effective protection from the sun, glare and create a pleasant indoor climate. The awning fabrics allow softly adjusted daylight inside and, depending on colour and quality, reflect a major part of the UV and heat radiation. On hot days this saves turning on the air-conditioning unit. And when it is cooler outside, the heat stays within your own four walls for longer.

Create your own personal sunshine in your house with a vertical designer blind from markilux.



**Natural light** increases your sense of well-being.

**Diversity in textiles** Whether opaque or transparent, discreetly patterned or with bright colours: In our markilux collection you will find just the right awning fabric to create your own personal sunshine.



**Children** enjoy playing in bright rooms.

***markilux***



# Best outlook for your privacy.

**See without being seen** With the textile shading systems from markilux you will always have a clear view outside and are at the same time protected against unwanted glances. Furthermore, you yourself can determine, depending on the choice of blind fabric, how much light shines into the kitchen, living room or bathroom. Choose the window blind that matches you and your home from a wide range of models, fabric colours and patterns. That's a nice outlook, don't you think?



**Well protected yet in the picture**  
markilux blind fabrics protect against inquisitive glances from outside, yet the view remains the same.

***markilux***



A modern dining table with white chairs and a vase of pink flowers on a balcony with a large window. The scene is brightly lit, suggesting a sunny day. The window looks out onto a cityscape with a brick wall and a blue railing visible. A plant is visible in the upper right corner, casting shadows on the wall.

# Models and Options



# My house. My style. My markilux.

**As individual as your home** Those who value stylish furnishings, will definitely not enter into any compromise as far as the view outside is concerned. markilux has the right style and more than adequate functionality to be able to offer a solution to meet the most demanding of requirements. Choose from a wide range of blind and awning models, a vast collection of fabrics in a broad choice of colours and patterns and many specification options to find just the right combination for your home.



**Drop-arm cassette awnings** Drop-arms with gas pistons tension the cover at an angle of up to 140 degrees to the vertical. A cassette awning with classic appearance that protects against the sun and still permits a clear view outside.



**Marquisolettes** The combination of vertical blind and drop-arm cassette awning. In the upper section, the solar and visual protection runs vertically, in the lower section the amount of incoming light can be determined in a flexible manner depending on the position at which the drop arms are set.



**Triangular blinds** A clever system offering bespoke solutions. Triangular windows or skylights are fitted with made-to-measure solar protection from markilux.

**Vertical cassette blinds** The blind cover passes in front of the window vertically over its entire height and offers ideal protection against inquisitive glances and the glare of the sun. When retracted, it is protected from wind and weather in the fully enclosed cassette and when extended is perfectly tensioned.





# Market-leading fabrics, woven in house.

**Our unique covers help to create a special ambience for you** The colour and quality of the awning fabric is what helps make the ambience on your patio something special. Depending on the brightness and hue, colour distinction, patterns and textures help create that unique special effect. As a leading manufacturer of high-grade awning covers with almost 100 years of experience in the manufacturing of textiles, markilux offers an unparalleled variety. The markilux textile design team is constantly developing new patterns in line with the latest trends, which are characterised by their timeless nature. Within the 250+ patterns in thematically coordinated colour families, you are certain to find your very own unique fabric.

## VISUTEX



**markilux visutex Collection 50/4/me** Discover the subtle, balanced jaquard effect and powerful colours of the fabrics with this stunningly textured weaving technique. These unique awning fabrics are available exclusively and without any surcharge only from markilux.

## SUNSIK



**Brilliant luminosity. Silky smooth surface.** sunsilk awning covers impress with their unique luminosity.

## SUNVAS



**Soft glow. Textile-like to the touch.** sunvas awning covers score with their textile character and natural appearance.

# Functionality can be so beautiful.

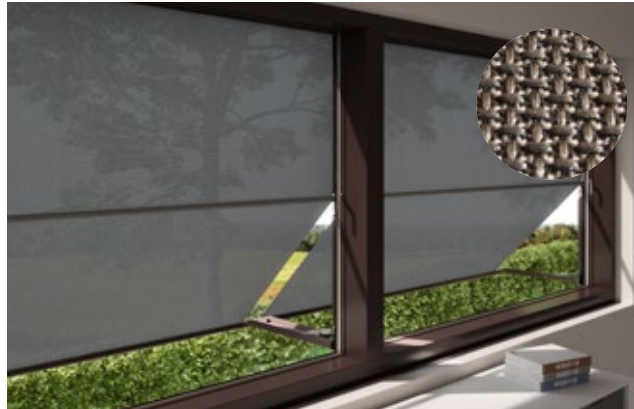
**Awning covers “Made in Germany”** We manufacture awning covers that maintain their shape and colour for years, and offer your home that special something. These high-tech awning fabrics are manufactured at the markilux production facility in Emsdetten, Germany in accordance with strict quality standards. The yarns are dyed using a process we ourselves developed and show their effect in up to 16 million distinctive colours with outstanding luminosity and colour intensity. This has resulted in functional textiles, which have set exceptionally high standards in terms of quality, UV protection, ease of care and appearance. markilux awning covers are available in the qualities “sunsilk” or “sunvas” or as fabrics in our markilux specials collection serving specific requirements.

## transolair



**Solar protection with a view** This sunvas fabric with special perforation technique stands for impressive transparency and good light and air permeability. This effectively reduces the build-up of heat.

## vuscreen ALU



**Solar protection with added functionality** This fabric has been woven with an openness of 3% thus allowing an excellent view outside. The aluminium particles encapsulated in the coating make it particularly effective at reflecting the sun's rays.



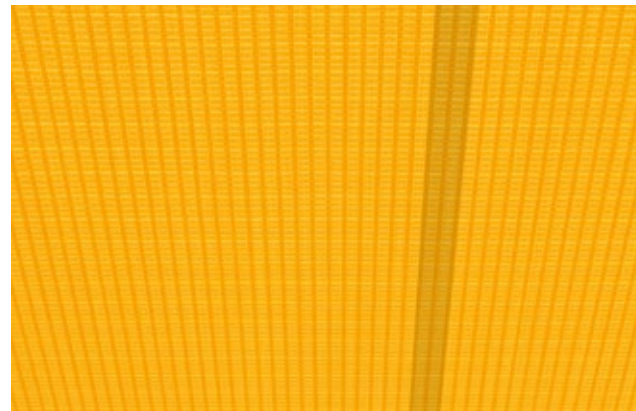
**markilux awning covers** During the production of our awning fabrics we leave nothing to chance. We produce our fabrics sunsilk and sunvas exclusively in Germany using the most modern weaving technology. We add a final finishing flourish to the fabric using our snc coating, a special formula developed in house that creates a self-cleaning effect. This finish gives our awning covers incredible longevity and resistance against rain, light and fluctuations in temperature. This is certified according to Oeko-Tex standard 100, which also guarantees they are free from harmful dyes or chemicals.

With an Ultraviolet Protection Factor (UPF) of 50+, all markilux awning covers made from sunsilk or sunvas offer the highest possible degree of UV protection. This allows you to enjoy sunny days for longer, without risk.\*

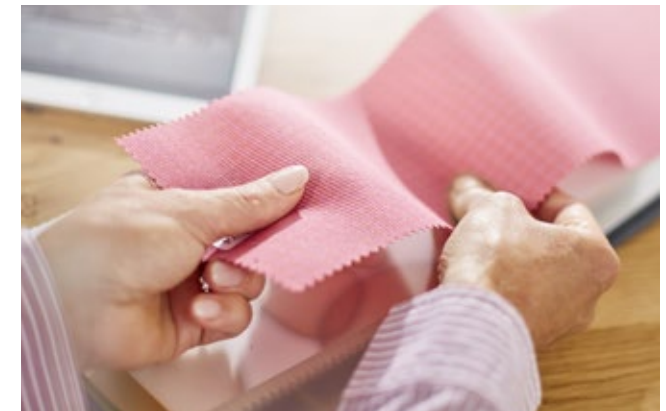
**He who seeks shall find** The most beautiful fabric for your designer awning can be found amongst the 250+ cover patterns at the showroom of your markilux specialist dealer or at [markilux.com](http://markilux.com)



**Self-cleaning snc effect** Water droplets pick up dirt particles and run off the awning cover. This gives you the peace of mind that your fabric will retain its colour and vibrancy for years without you having to lift a finger.



**Bonded awning covers** Panel joints bonded together ultrasonically ensure a consistent, unobtrusive appearance. Its excellent resistance to water, light and fluctuations in temperature ensures that the life expectancy of the cover is extended substantially.



**Light, weather and colour resistance** High-tech yarns dyed right to the core and the high-grade snc finish developed in house guarantee the most stunning shade in which to relax and unwind for many years to come.

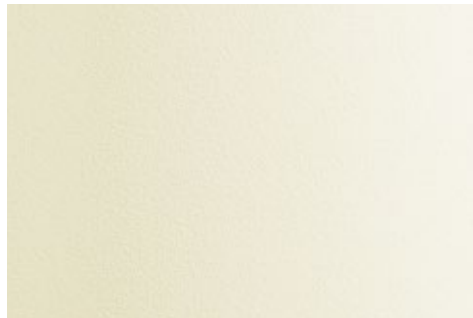
\* Protect your skin with care! Do not spend longer periods outside without applying sun cream. The UPF afforded by the awning applies only to direct sunlight. It offers no protection against reflected sunlight (e.g. from water).

# Turn your imagination into reality with our range of stunning frame colours.

**Choose from our extensive collection of colours** Choose the awning frame colour to complement the colour of the fabric and configure your own amazing design. From a variety of shades of white through to the elegant shades of anthracite, a wide range of colours are available to you. Do you want a particular colour scheme? No problem! We will gladly manufacture your dream awning in your own personal shade. Our high-grade powder coating finish is guaranteed for any awning colour you choose.



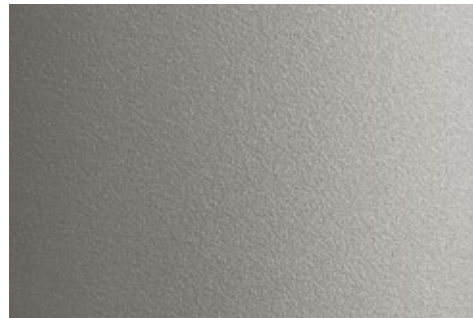
Traffic white RAL 9016



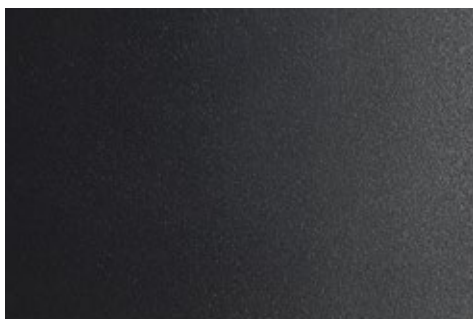
Off-white textured finish 5233



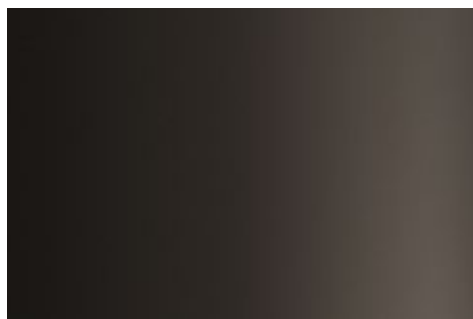
Metallic aluminium RAL 9006



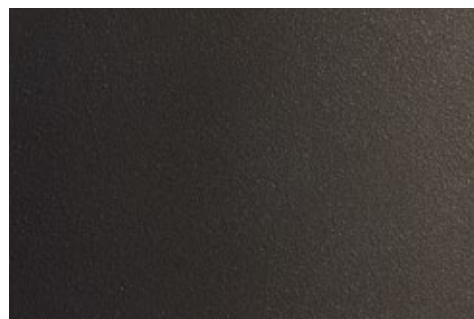
Stone grey metallic 5215



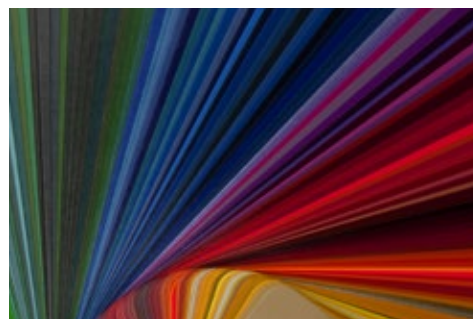
Anthracite metallic 5204



Grey brown RAL 8019



Havana brown textured finish 5229



RAL colour of your choice

© RAL Bonn 2018





# Control at the touch of a button, or even automatically.

**Ease of operation that meets the highest demands and any weather conditions** The choice is yours: manual operation (spring-assisted on request), hard-wired motor or radio-controlled motor with remote control, are all possible on most models. You can even operate the system while you are away via smartphone or tablet. Better yet, why not put your feet up and add sun, wind and rain sensors to provide automatic intelligent control of your markilux designer awning or blind? Your markilux specialist dealer is at your disposal should you have any queries regarding how you can operate your markilux with the greatest of ease and will provide you with details on how you can connect several individual units and operate them with only one touch of a button.



**Home automation** Easily control your window blinds by smart phone or tablet – also from away from home. The smart control with io technology via app makes it possible.



**Intelligent control** With sun, wind and rain sensor, your markilux reacts to any change in the weather. In sunny conditions the window blinds extend automatically, with wind and rain they retract.



**markilux radio-controlled motor** Perfect protection from the sun, glances and glare comfortably at the touch of a button.





A person is sitting on a balcony, looking out over a residential building. The person is wearing blue jeans and is holding a white, textured cushion. The balcony has a metal railing. In the background, there is a brick building with a blue roof and a white chair. The sky is clear and blue.

# Product Overview and Technical Data

# Vertical Cassette Blinds

**In sun, wind and weather** When the blinds are retracted, the cassette completely encompasses the cover and protects it perfectly from the effects of wind and weather. Vertical cassette blinds have a guide system down each side that usually runs the entire height of the window and in so doing provides ideal protection against the glare of the sun and inquisitive glances.

Cassette shape, operating comfort, cover guidance system and installation type can be chosen at will just like your favourite pattern from the over 250 awning fabrics in the markilux collection.



**Perfect cover tension** Depending on the model, markilux vertical cassette blinds and awnings are equipped with special gas pistons. This gives the cover perfect tension even in larger units and under greater wind loads.

## Cassette shape



### markilux 710 – 750

Square cassettes,  
95 × 95 mm



### markilux 810 – 850

Round cassettes,  
Ø 115 mm



### markilux 776

Square cassette,  
125 × 125 mm



### markilux 876

Round cassette,  
Ø 130 mm



### markilux 620 / 625

Oblong / square cassette,  
620 = 95 × 110 mm  
625 = 125 × 135 mm

## Cover guidance system



### Stainless steel cables

Coated with plastic, hardly visible, for a discreet appearance



### Guide rails / tracks

Sturdy and robust, on request with the markilux tracfix system



### Stainless steel rods

Fine, elegant and stable: the visual highlight for a stylish appearance

## Fixture type



### To the wall

The frame shape that matches your windows



### Stand-off fixture

Various brackets and decorative covers can be supplied depending on the model



### Reveal fixture

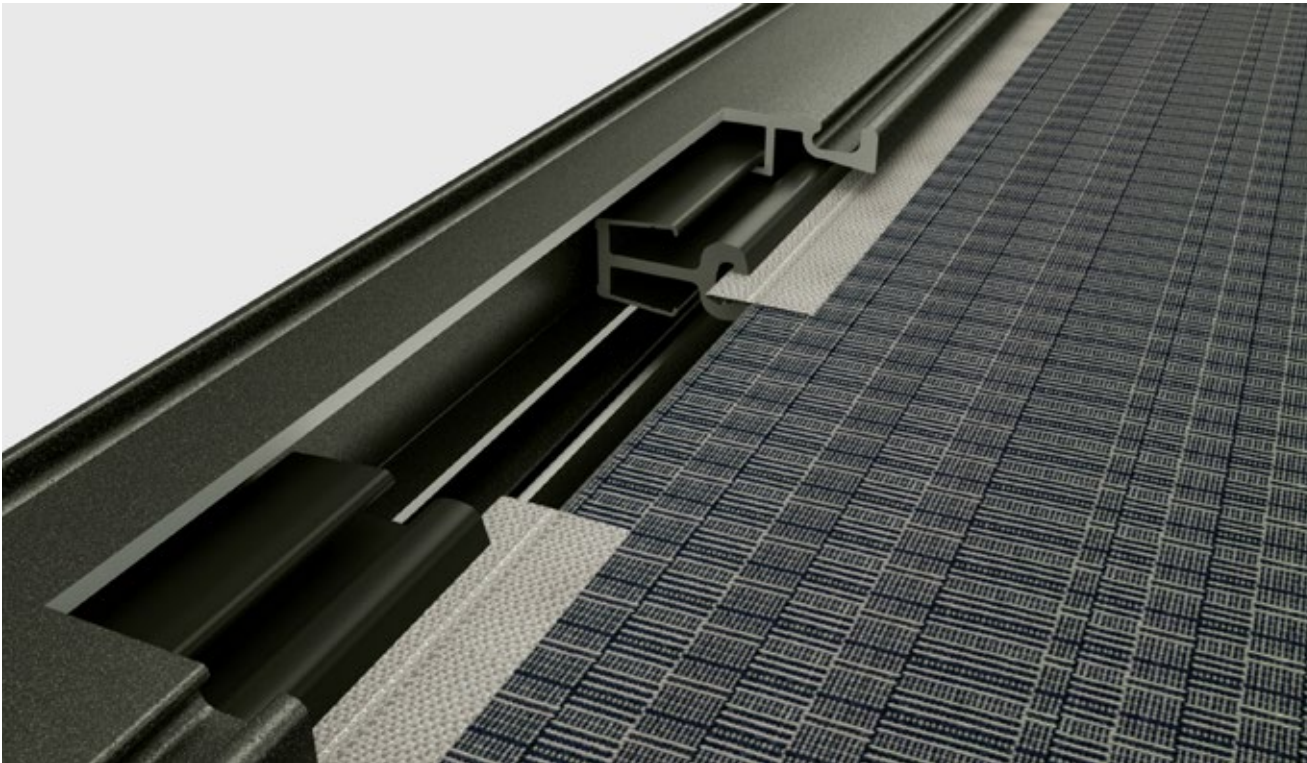
Discreet and unobtrusive

## Technical overview

Model	710 / 810	720 / 820	750 / 850	776 / 876	620 / 625
Maximum dimensions optional	500 × 350 cm	300 × 350 cm	500 × 350 cm	600 × 350 cm 400 × 600 cm	600 × 350 / 550 × 400 cm (625) 400 × 300 / 300 × 400 cm (620)
Cover guidance system optional	Stainless steel cable	Guide rail	Stainless steel rods	Guide track tracfix	Guide track (tracfix)
Cover tension	Gravity-fed	Gravity-fed	Gravity-fed	Gas piston	Gravity-fed
Fixture type	To the wall / ceiling / in a reveal	To the wall / ceiling / in a reveal	To the wall / ceiling / in a reveal	To the wall / in a reveal / stand-off	To the wall / in a reveal
Options				Panoramic window possible only with tracfix	
Wind resistance class	2	2	2	2 - 3*	2 - 3*
Beaufort force / wind speed	5 → 28 - 37 km/h; 17 - 23 mph	5 → 28 - 37 km/h; 17 - 23 mph	5 → 28 - 37 km/h; 17 - 23 mph	5 - 6 → 28 - 48 km/h; 17 - 30 mph	5 - 6 → 28 - 48 km/h; 17 - 30 mph

\* Depending on size

## Options and accessories for vertical cassette blinds and awnings



**markilux tracfix** One of the many sophisticated features offered by markilux: the lateral cover guidance system without a gap between the awning / blind cover and the guide track. Gives a more attractive overall appearance and better wind stability.



### **Decorative covers for the track brackets**

The screw heads disappear. Enhances the overall appearance.

**markilux panoramic window** Wouldn't you like to be able to sit outside below your glass canopy, protected from wind and weather and still be able to enjoy an unobstructed view outside? If so, we can offer you the markilux panoramic window, which can be fitted to the markilux 776 or 876 with tracfix.

Max. blind dimensions: 600 cm × 300 cm. Max. height of the window section: approx. 135 cm.

**Even you will be enthusiastic** markilux offers a variety of stylish and intelligent solutions to put your home in the best of lights. For complete information and competent advice kindly ask your markilux specialist dealer or go to [markilux.com](https://www.markilux.com)



# Drop-arm cassette awning



**markilux 730**  
Square cassette,  
95 × 95 mm



**markilux 830**  
Round cassette,  
Ø 115 mm

**Great solar protection and great visibility** Drop arms are fitted with optimised stainless steel gas pistons giving excellent cover tension. Adjustable down to a maximum of 140°. Front profile with spring-loaded closing mechanism. Telescopic accro bars are optionally available for balcony installations.

## Maximum dimensions

700 × 250 cm

## Cover guidance system

drop-arm (80 – 150 cm)

## Cover tension

stainless steel gas piston

## Fixture type

to the wall / ceiling / in a reveal  
optional: accro bars

## Wind resistance class 2

Beaufort force / wind speed  
5 → 28 – 37 km/h; 17 – 23 mph

# Marquisolette



**markilux 740**  
Square cassette,  
95 × 95 mm



**markilux 840**  
Round cassette,  
Ø 115 mm

**Appearance and technology in elegant combination** Guide track with high-grade slide mechanism. Drop arms with gas piston technology and markilux windlock mechanism. The markilux 740 is fitted with a front cover profile as standard – gives a more tidy appearance when the marquisolette is retracted.

## Maximum dimensions

300 × 300 cm

## Cover guidance system

guide rail  
plus drop-arm (60 cm)

## Cover tension

stainless steel gas piston

## Fixture type

to the wall / in a reveal

## Wind resistance class 2

Beaufort force / wind speed  
5 → 28 – 37 km/h; 17 – 23 mph

# Triangular blind



**markilux 893**  
Round cassette,  
Ø 115 mm



Tensioning system using high tensile tensioning cords and gas pistons for optimum cover tautness.

**The clever system offering bespoke solutions** Patented clip fixture of the guide tracks to the brackets permits interior, exterior, vertical, horizontal or diagonal installation.

#### Maximum dimensions

400 × 500 cm

#### Cover guidance system

guide track  
plus tensioning cords

#### Cover tension

gas piston in the track

#### Fixture type

stand-off

#### Wind resistance class 2

Beaufort force / wind speed  
5 → 28 – 37 km/h; 17 – 23 mph



You know what you want – we bring your vision to life.  
Ask your markilux specialist dealer and become inspired at [markilux.com](https://www.markilux.com)

Ideas, detailed information, professional advice and all exquisite markilux awning cover patterns can be found in your specialist dealer's showroom and at [markilux.com](http://markilux.com)

[markilux.com](http://markilux.com)

***markilux***  
safe timeless beautiful