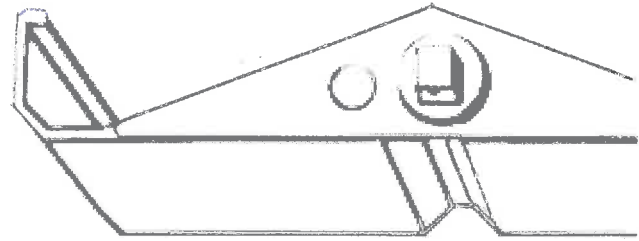


# TECHNICAL DETAILS

## 200 LINEAR OPENING ROOF



### BLADE SPECIFICATIONS

- Weight per lineal metre ..... 2.095 kgm
- Actual blade width ..... 200 mm
- Blade cover - opening system ..... 188 mm
- Weight per square metre - opening system ..... 11.15 kg/sqm
- Blade centres - opening system 188 mm

### SPANS AT A GLANCE

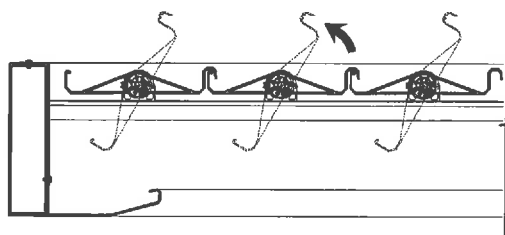
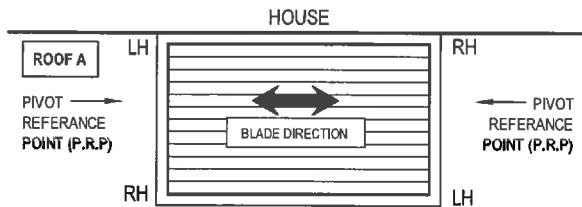
**IMPORTANT:** Refer to page section 10 for engineering details. Factors such as climate, terrain, shielding, location, type of structure all contribute to determine spans.

WIND ZONE	INSIDE	LOW	MED	HIGH	VERY HIGH
Factored wind speed at building	Self wt	32m/s-115km/h	37m/s-133km/h	44m/s-158km/h	50m/s-179km/h
Ultimate limit state loads (kPa)		+1.1 & -1.38	+1.48 & -1.85	+2.09 & -2.61	+2.70 & -3.38
200 Linear Opening Roof	4100	3800	3550	3100	2800

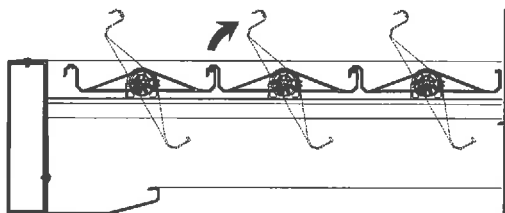
### INSTALLATION OPTIONS

#### CALCULATE OPTIMUM FRAME OPENING SIZES

##### OPENING DIRECTION OF BLADES

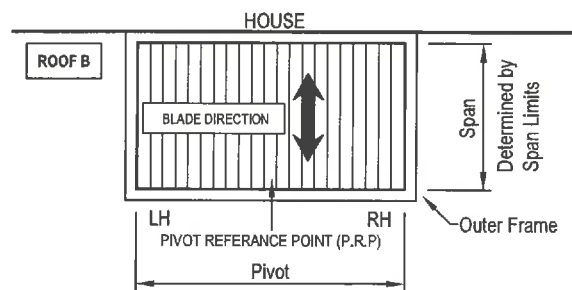


Right hand Up from P.R.P



Left Hand Up from P.R.P

##### CALCULATE OPTIMUM FRAME OPENING SIZES



**P.R.P:** Establish Pivot Reference point (P.R.P)  
There are two options Roof (A) and Roof (B).

**Span:** Check engineering span limits

**Pivot:** Example Calculation showing - 17 Blades

**Step 1** 16 blades x 188 (CRS) = 3008  
1 blade @ 200 (Blade Size) + 200  
17 blades in total = 3208

**Step 2** Blade Cover = 3208  
+ 2 x 22mm Clearance @ ends = 44  
Total exact pivot length = 3252mm

- 150mm Wide internal gutter provides cover if clearance increases over 22mm at ends

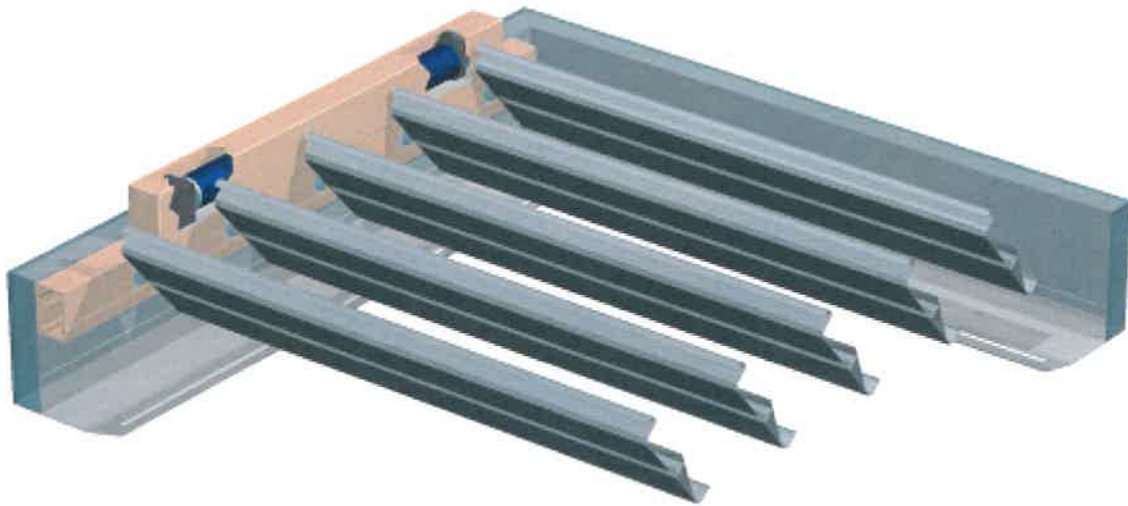
- Blade direction either Right Hand up or Left Hand up.

# TECHNICAL DETAILS

## 200 LINEAR OPENING ROOF



CORNER SECTIONAL VIEW - MOTORISED



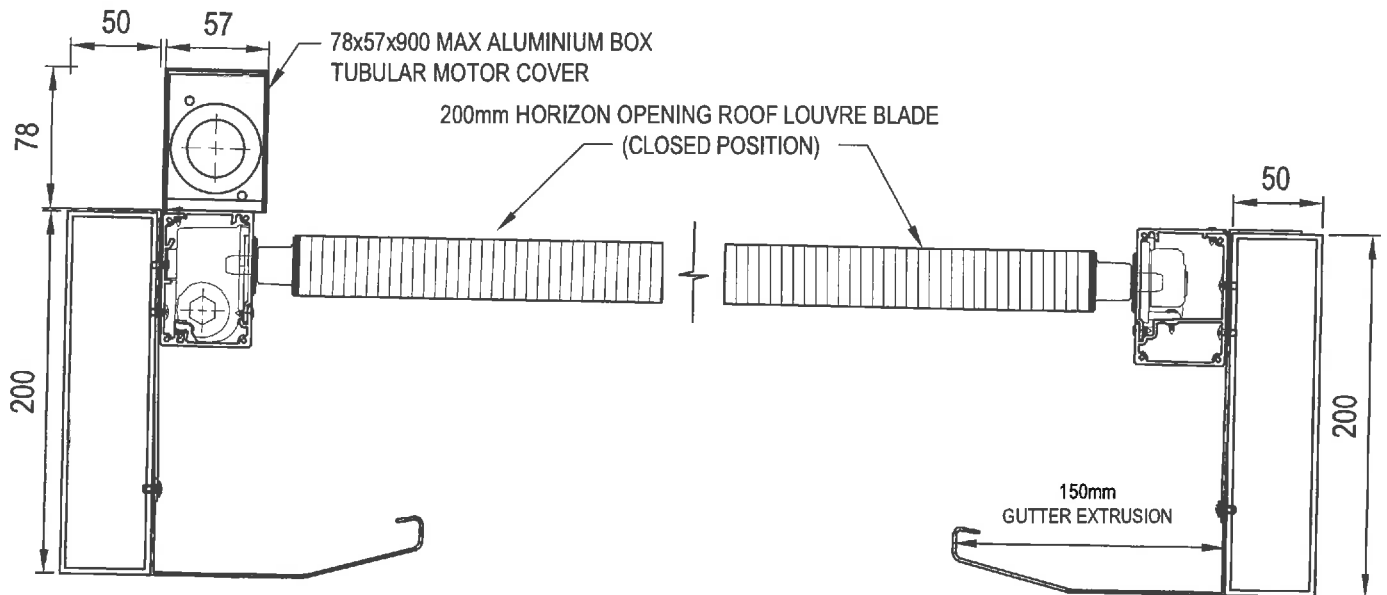
CORNER SECTIONAL VIEW - HAND OPENING



# TYPICAL DETAIL - 200mm HORIZON MOTORISED OPENING ROOF

**SIDE ELEVATION**

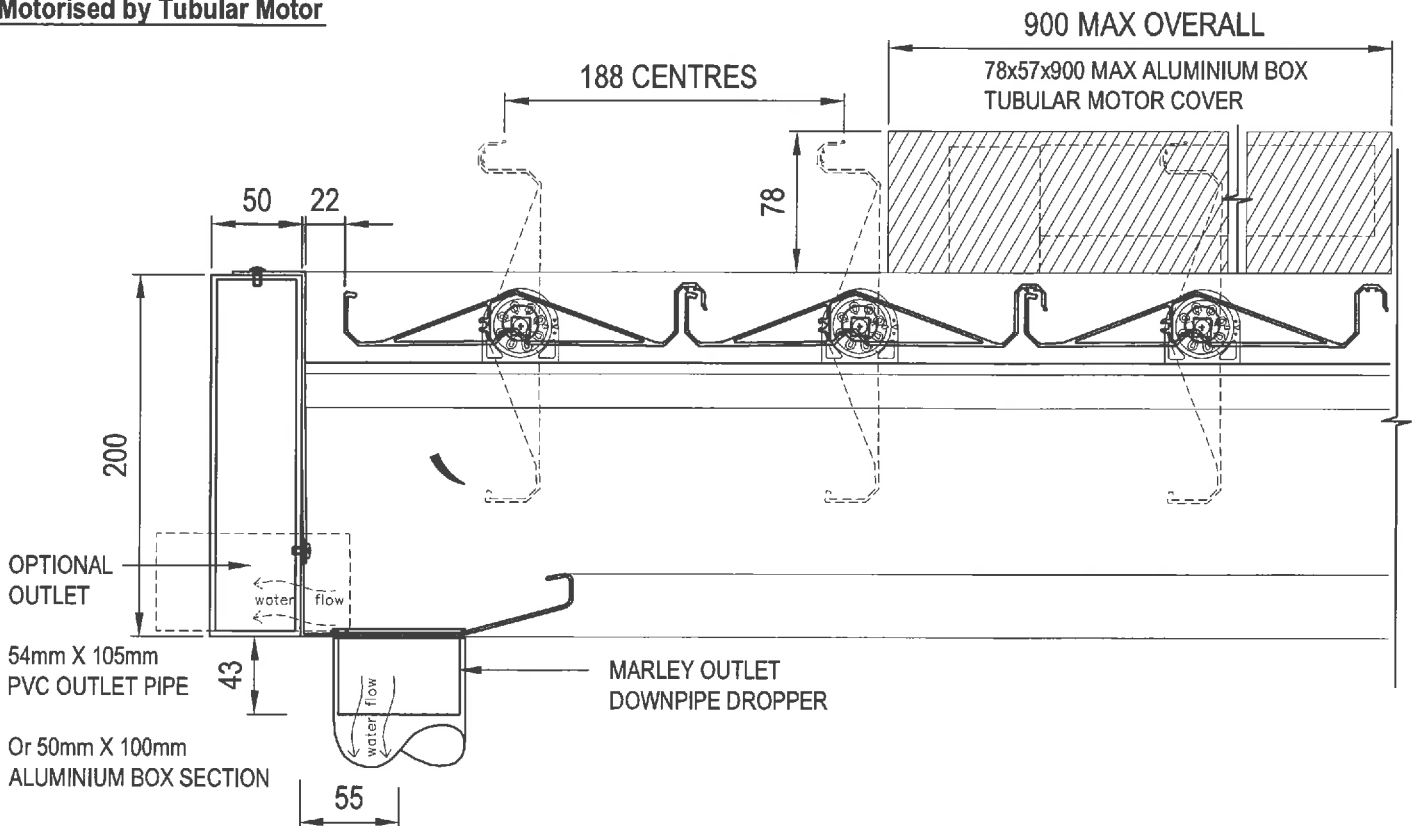
## Drive Side - Motorised by Tubular Motor



**DETAIL SHOWING FALL IN FRAME**

**END ELEVATION**

## Motorised by Tubular Motor

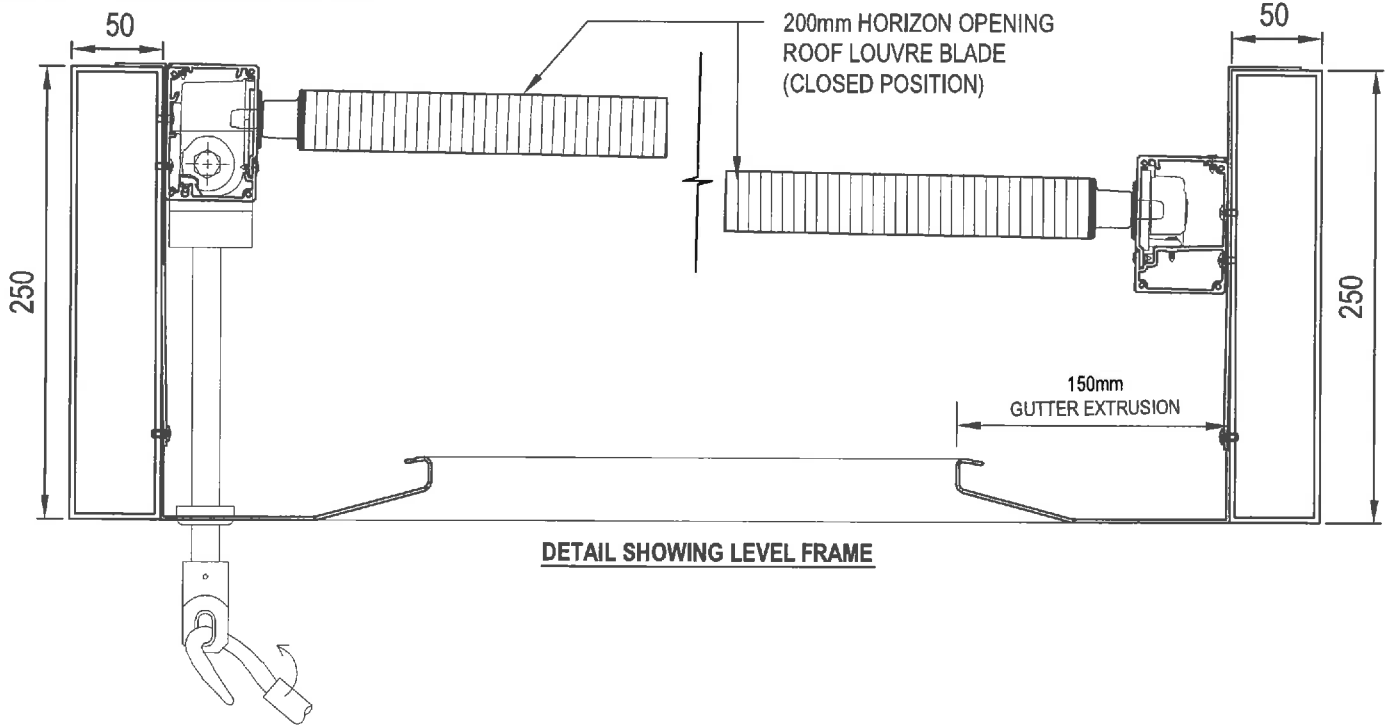


File	4.19
Scale	1:4
Date Modified	10 April 2006

# TYPICAL DETAIL - 200mm HORIZON HAND ADJUSTABLE OPENING

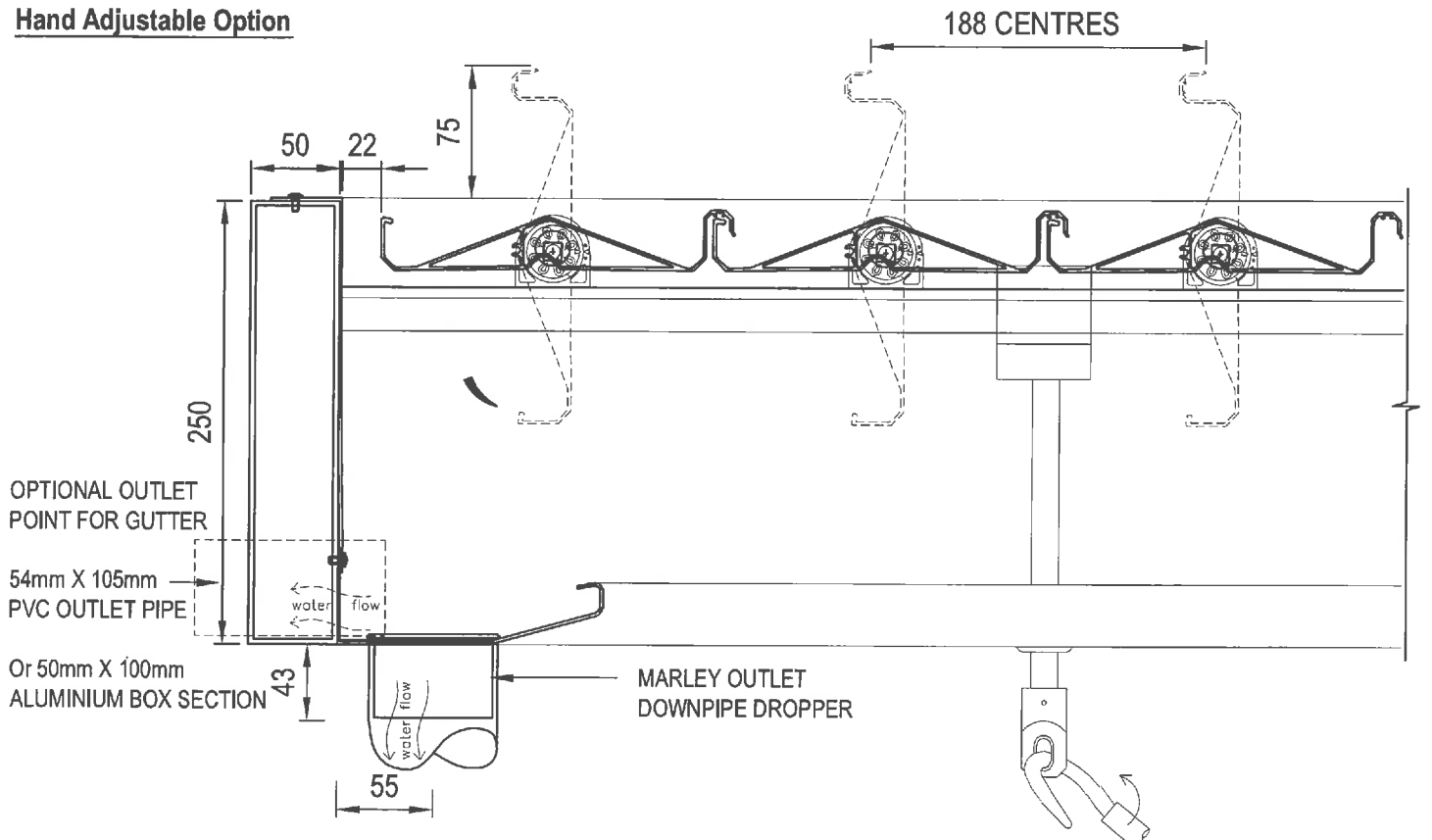
SIDE ELEVATION

## Drive Side - Hand Adjustable Option



END ELEVATION

## Hand Adjustable Option



File	4.20
Scale	1:4
Date Modified	10 April 2006