



Vertical cassette blind

## **markilux 720/820**

Compact cassette blind with angled guide rails.

Wind resistance class 2

Beaufort 5 → 7.5–10.4 m/s → 28–37 km/h → 17–23 mph  
markilux 820

# Product characteristics

markilux 720

face fixture



face fixture



01  
02  
03  
04  
05  
06  
07  
08  
09  
10  
11  
12  
13  
14  
15  
16  
17  
18  
19  
20

side view, face fixture,  
standard gearbox operation

side view, motor operation <sup>1)</sup>

side view, face fixture,  
standard gearbox operation

side view, motor operation <sup>1)</sup>



reveal fixture



<sup>1)</sup> optional configuration

## Product characteristics

### Description

- vertical blind with angled guide rails and gravity-fed tensioning system – for areas up to 10.5 m<sup>2</sup>.

### Special features

- fully encompassing cassette that protects the cover perfectly
- compact cassette profile that lends an attractive appearance to the unit
- option of manual operation from inside the building, drive shaft passes through the wall
- fixture directly through the angled rails – the cassette is positioned right against the wall

### Dimensions

- single unit: 74 cm – 300 cm in width, maximum height 350 cm
- maximum width × height: 300 cm × 350 cm
- intermediate sizes are available

### Roller tube and lateral bearings

- round roller tube Ø 63 mm with keyway, galvanised steel
- the roller tube bearing is made of stainless steel

### Blind profiles

- extruded aluminium, in façade quality, powder coated
- markilux 720: cassette profile in one piece, square, height × depth 95 mm × 95 mm
- markilux 820: cassette profile in two pieces, round tear-shaped, Ø 115 mm
- angled guide rails, width × depth 30 mm × 49 mm
- front profile round, Ø 32 mm

### Side caps

markilux 720:

- the cassette end caps are made of high-quality plastic, powder coated
- the front profile end caps are made of high-quality plastic, powder coated
- the bottom profile end caps are made of high-quality plastic, dyed right through, black

markilux 820:

- the cassette end caps are made of high-quality plastic, powder coated
- the front profile end caps are made of high-quality plastic, powder coated
- the bottom profile end caps are made of high-quality plastic, dyed right through, black

### Fixture brackets

- self-supporting cassette attached to the top of the angled guide rails
- without brackets, fixture directly through the angled guide rails
- face or reveal fixture

01 **Frame colours**

02 markilux blind colours without surcharge

03 traffic white RAL 9016

04 metallic aluminium RAL 9006

05 grey brown, similar to RAL 8019

09 off-white textured finish, 5233 <sup>1)</sup>10 stone grey metallic, 5215 <sup>1)</sup>11 anthracite metallic, 5204 <sup>1)</sup>16 Havana brown textured finish, 5229 <sup>1)</sup>**Non-standard powder-coated finish**

Bespoke frame colours at a surcharge – matt, metallic and pearl finishes as well as other colour ranges (DB, Tiger etc.) on request. All frame colours are available at a surcharge with enhanced corrosion protection.

**1)** textured finish

Colours may differ slightly from those depicted in both hue and finish.

## Dimensions and configuration options

Single unit

		Overall blind width					Blind minimum width	
		100	150	200	250	300	Hard-wired motor	Radio-contr. motor
Order dimensions		50	101	151	201	251	75	74
		100	150	200	250	300		
AH	120						75	74
	160							
	200							
	250							
	300							
	350							

dimensions in cm

AH = unit height

### Operation

	standard	optional
crank handle	✓	—
crank handle, operation from the rear	—	✓
crank handle, interior operation	—	✓
hard-wired motor	—	✓
radio-controlled motor io, 868 MHz	—	✓
radio-controlled motor RTS, 433 MHz	—	✓

### Coupled Blind

not available

### Optional accessories

automatic controls (light, wind, rain)

**N.B!** – Important background information can be found in the chapter “Optional Accessories”.

Blind cover	fabric range no.	standard	optional	model	overall blind width	unit height	cover manuf.
sunvas	301.. / 309..-315..	✓	—	720	≤ 300	LN	
				820			
sunsilk	324.. / 325.. / 328.. / 369..	✓	—	720	≤ 300	LN	
				820			
perfortex	331.. / 332..	✓	—	720	≤ 250	LN	
				820			
sunvas (250 cm)	31008, -09, -13, -16, -18, -25, 27, -28, -31, -36, -37, -57, -58, 31109, -14, -17	✓	—	720 / 820	≤ 250	N	
transolair	338..	—	✓	720 / 820	≥ 251 ≤ 400	≤ 240	N
				720 / 820	≥ 251 ≤ 400	≥ 241	QN
sunvas (320 cm)	31008, -09	✓	—	720 / 820	≤ 320		N
				720 / 820	≥ 321 ≤ 400	≤ 310	N
				720 / 820	≥ 321 ≤ 400	≥ 311	QN
vuscreen Alu	317..	—	✓	720	≤ 250	≤ 250	N
				820	≥ 251 ≤ 400	≤ 240	N
				820	≥ 251 ≤ 400	≥ 241	QN
				720 / 820	≤ 185		N
Soltis Perform 2	92-20..	—	✓	720 / 820	≥ 186	≤ 172	N
				720 / 820	≥ 186	≥ 173	QN
perla	370..	—	—	—			
perla FR	374.. / 375..	—	—	—			

dimensions in cm

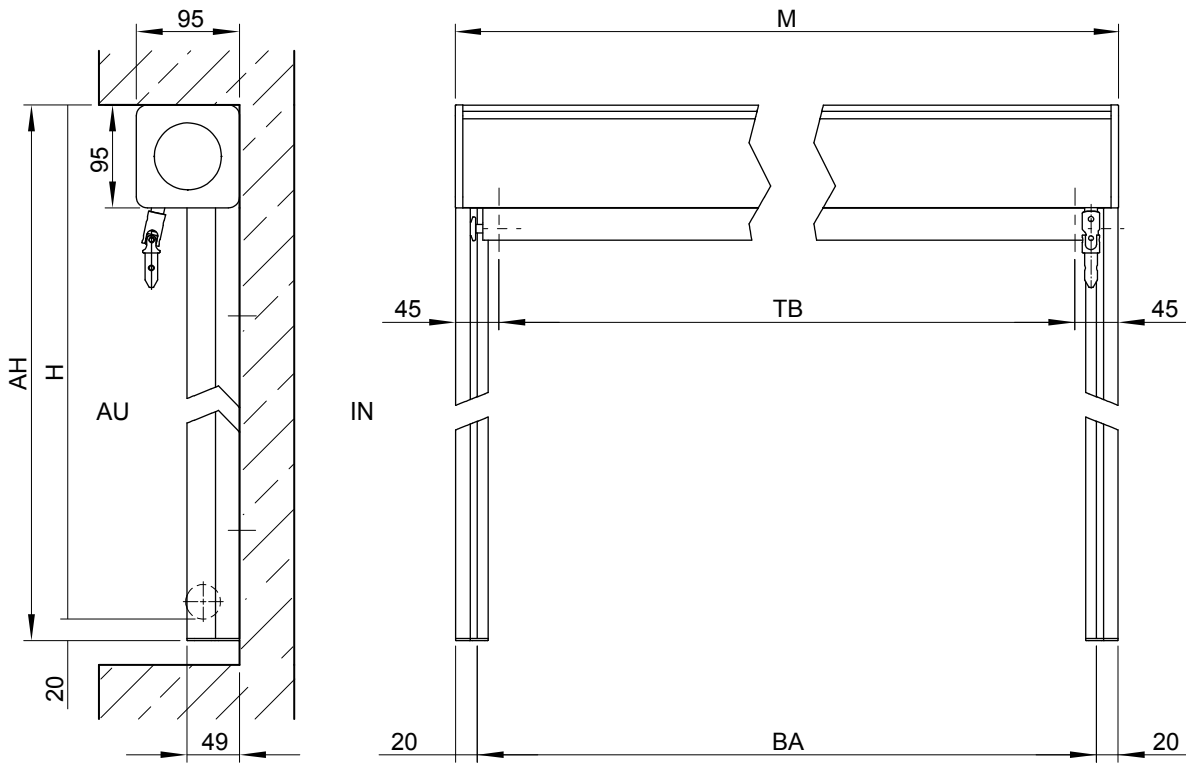
N = seamless

LN = vertical seams, panel width usually 120 cm

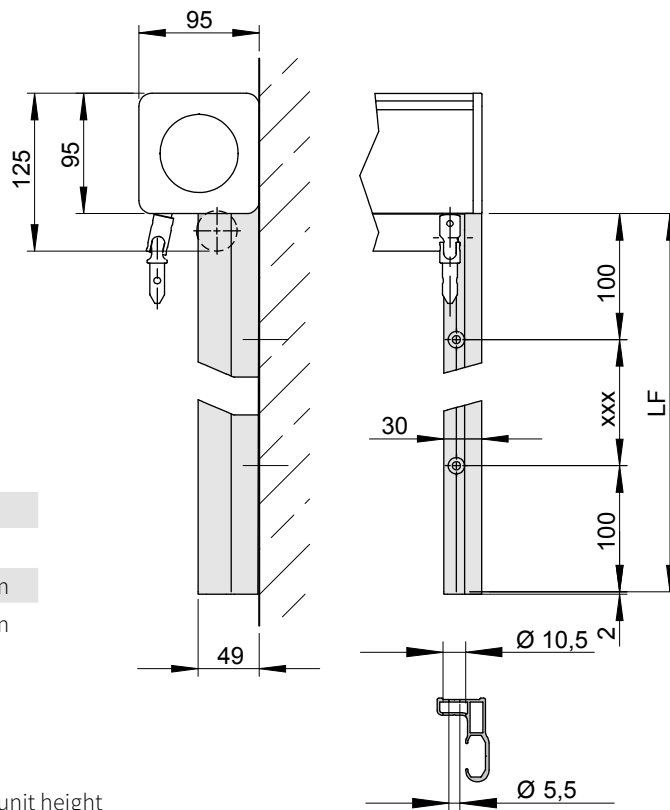
QN = horizontal seam

# markilux 720

## Dimension overview



## Face fixture



ABO xxx	LF
2	1-1500 mm
3	1501-3000 mm
5	3001-3500 mm

**AH** = order dimension = unit height

**AU** = exterior

**ABO** = number of drill holes in the range xxx

**BA** = width between fixture points

**H** = unit height

**IN** = interior

**LF** = length of the guide rail

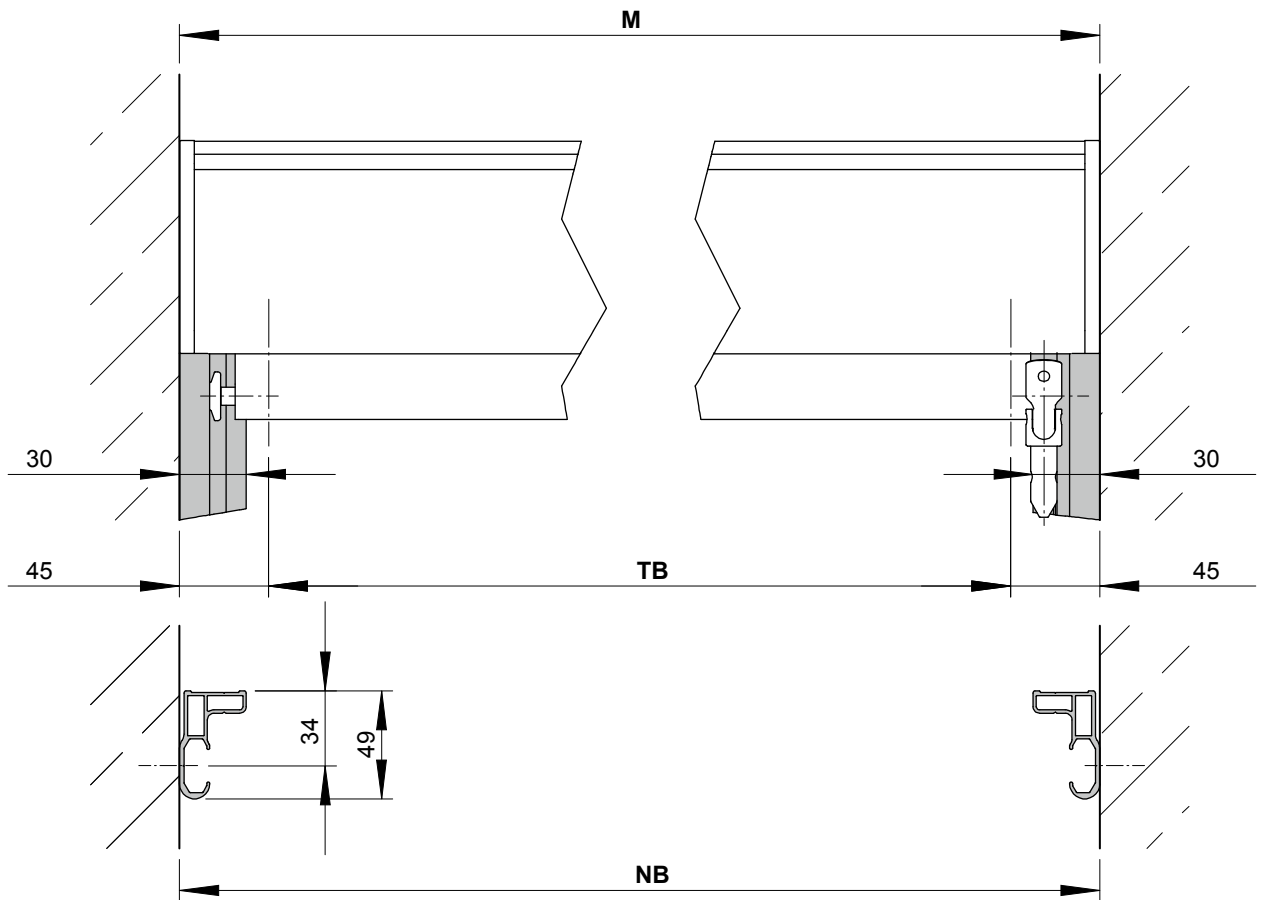
**M** = order dimension = overall blind width

**TB** = cover width

dimensions in mm

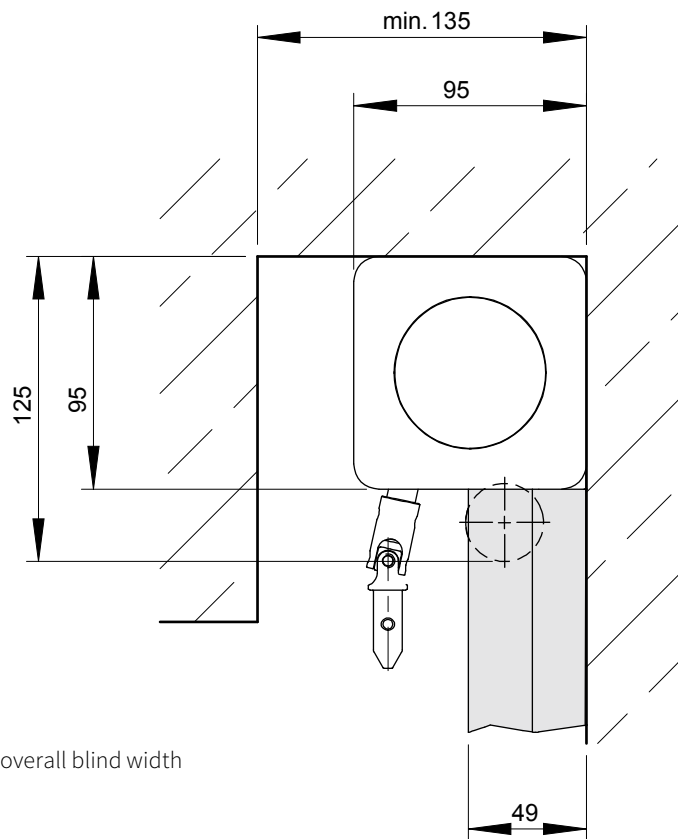
# markilux 720

Reveal fixture, gearbox / motor operation



01  
02  
03  
04  
05  
06  
07  
**08**  
09  
10  
11  
12  
13  
14  
15  
16  
17  
18  
19  
20

Reveal fixture in a top window well, gearbox operation



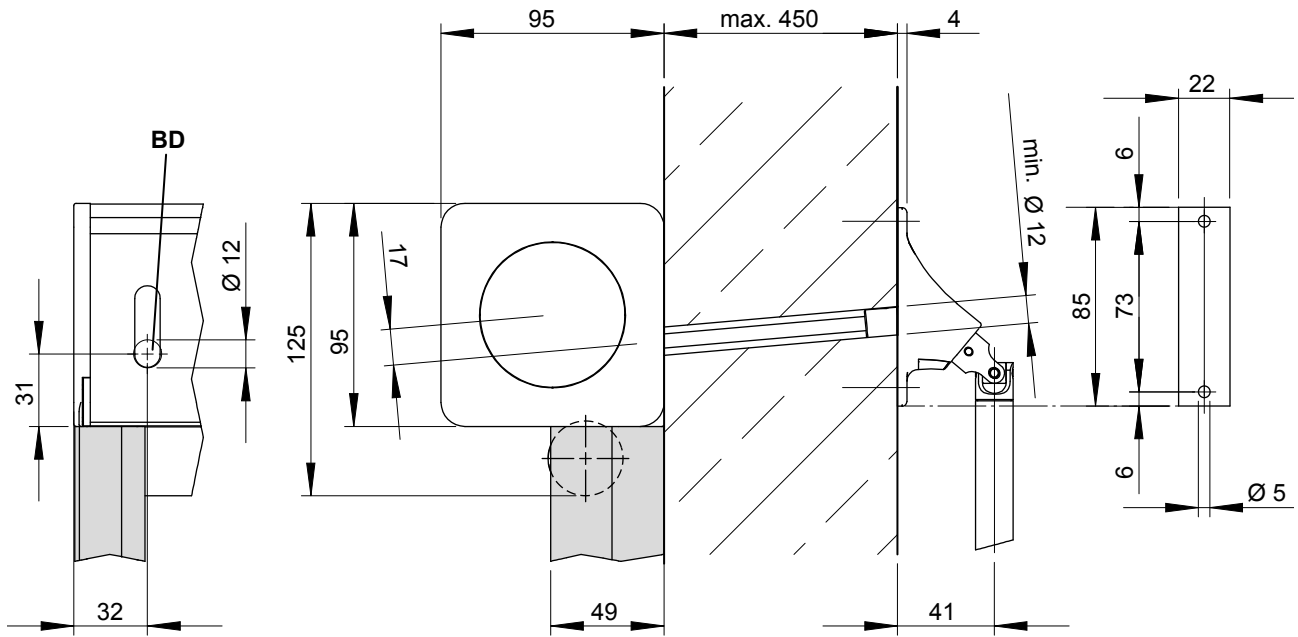
- M** = *order dimension* = overall blind width
- NB** = reveal width
- TB** = cover width

dimensions in mm

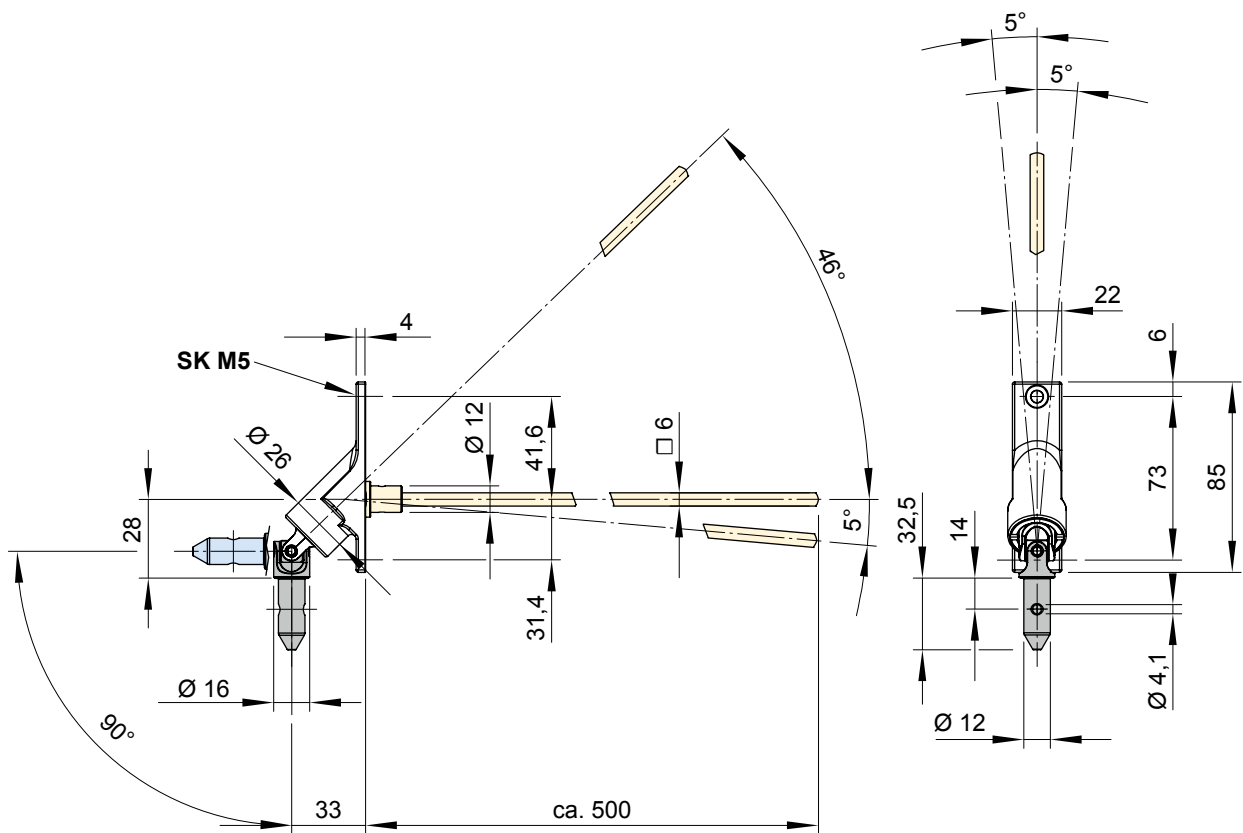
01  
02  
03  
04  
05  
06  
07  
08  
09  
10  
11  
12  
13  
14  
15  
16  
17  
18  
19  
20

# markilux 720

Face fixture, interior operation



Handle for interior operation



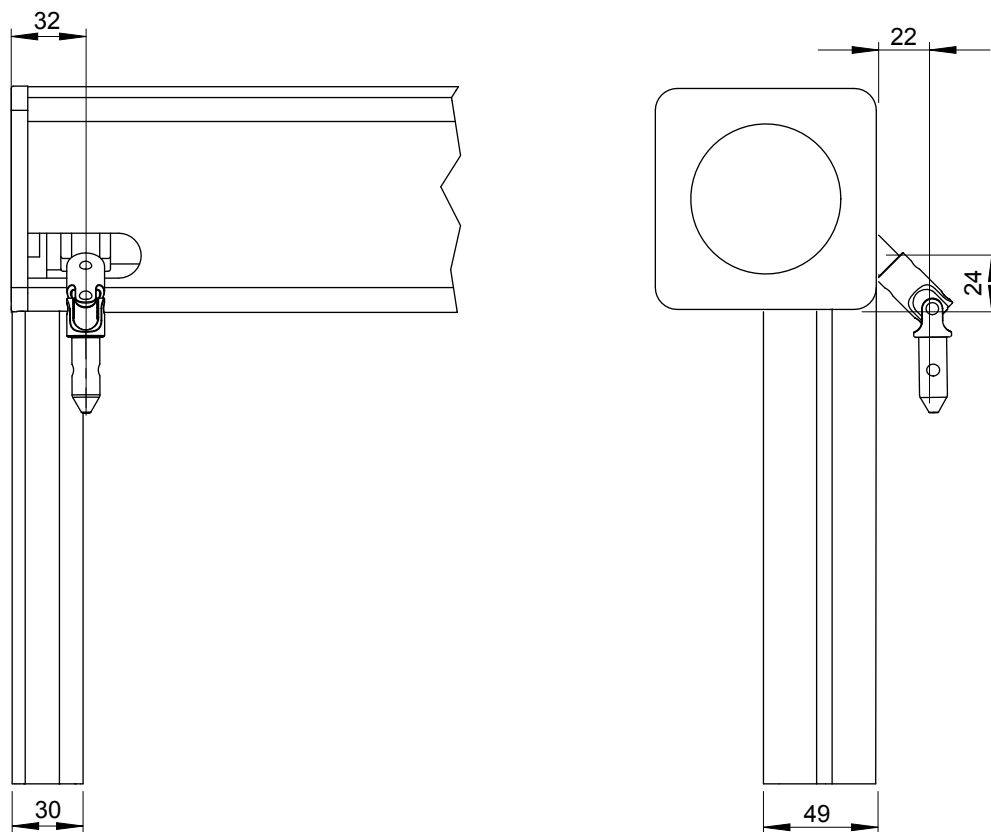
- BD = horizontal drill hole
- SK = chase out depth

dimensions in mm

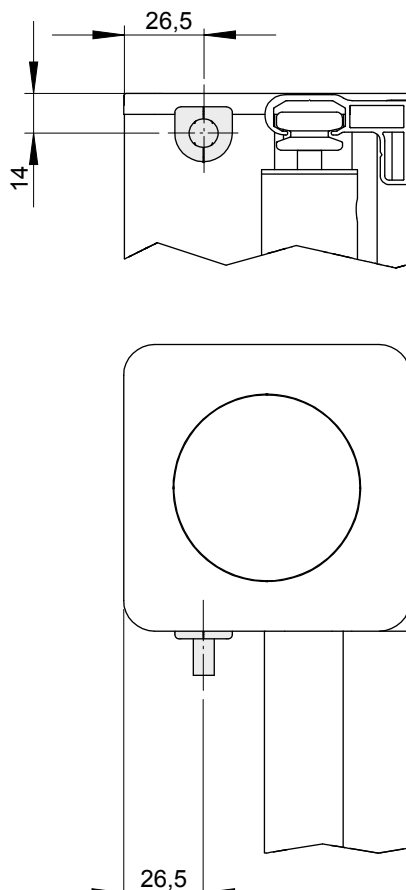


# markilux 720

Manual operation from the rear



Motor cable exit point

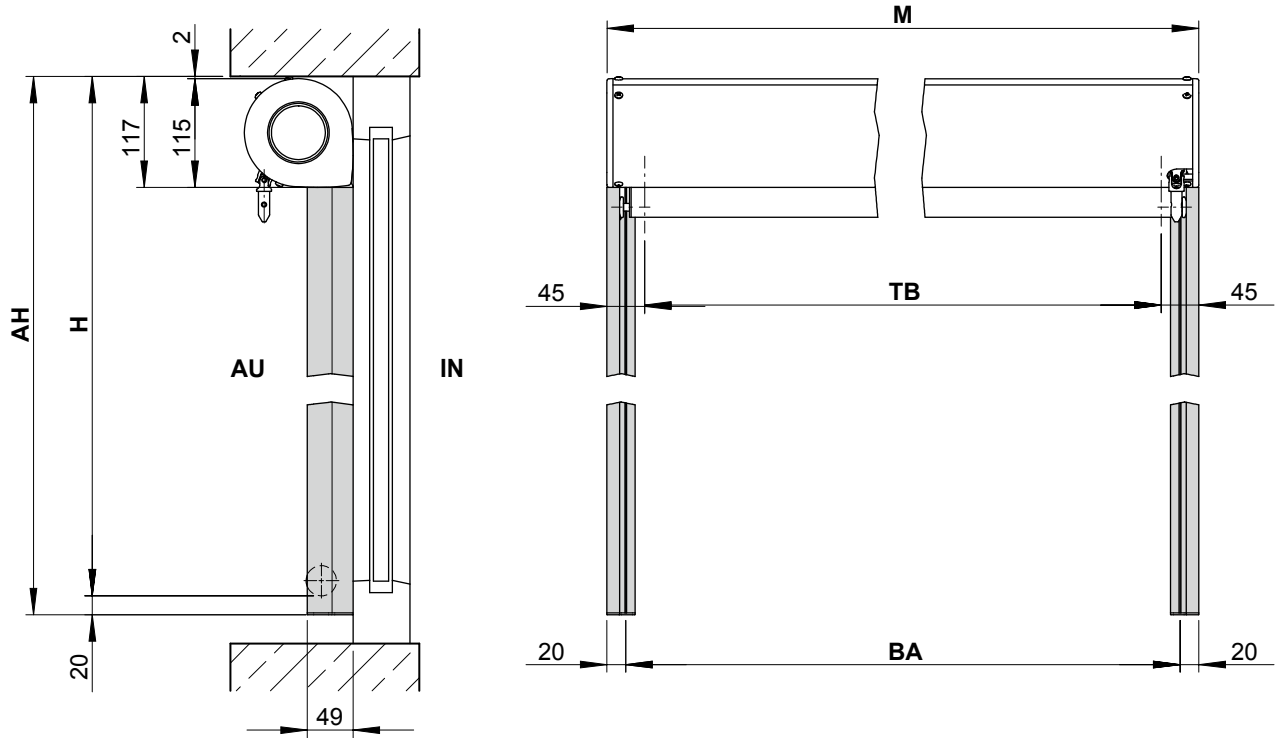


dimensions in mm

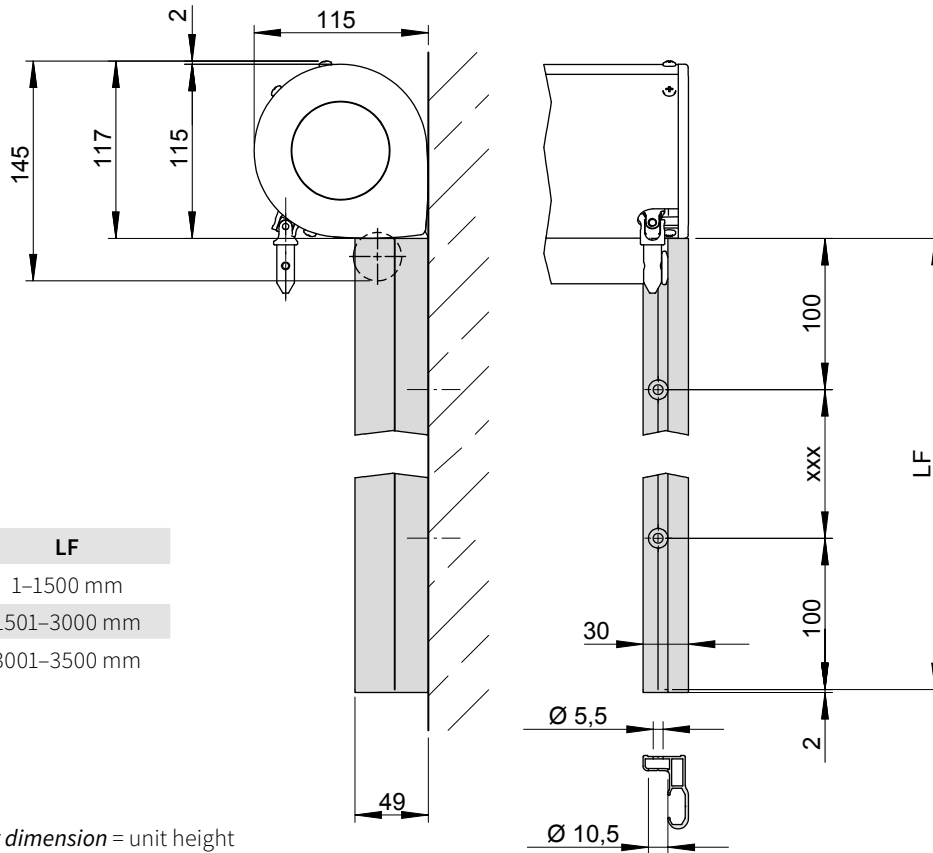
- 01
- 02
- 03
- 04
- 05
- 06
- 07
- 08**
- 09
- 10
- 11
- 12
- 13
- 14
- 15
- 16
- 17
- 18
- 19
- 20

# markilux 820

## Dimension overview



## Face fixture



ABO xxx	LF
2	1-1500 mm
3	1501-3000 mm
5	3001-3500 mm

**AH** = order dimension = unit height

**AU** = exterior

**ABO** = number of drill holes in the range xxx

**BA** = width between fixture points

**H** = unit height

**IN** = interior

**LF** = length of the guide rail

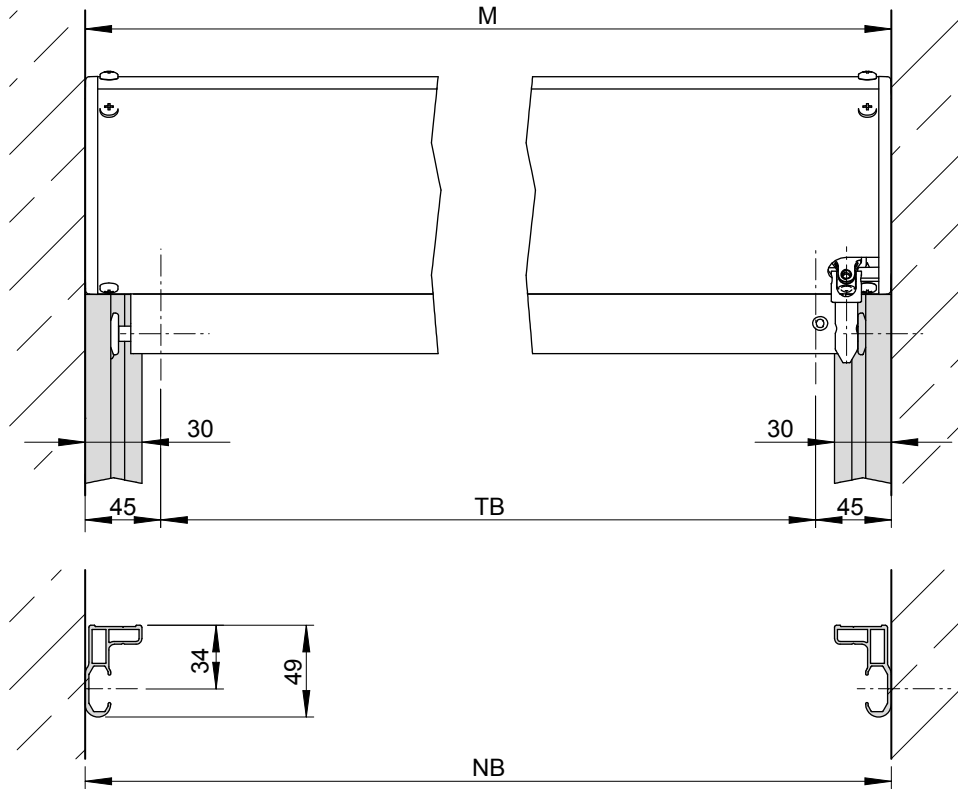
**M** = order dimension = overall blind width

**TB** = cover width

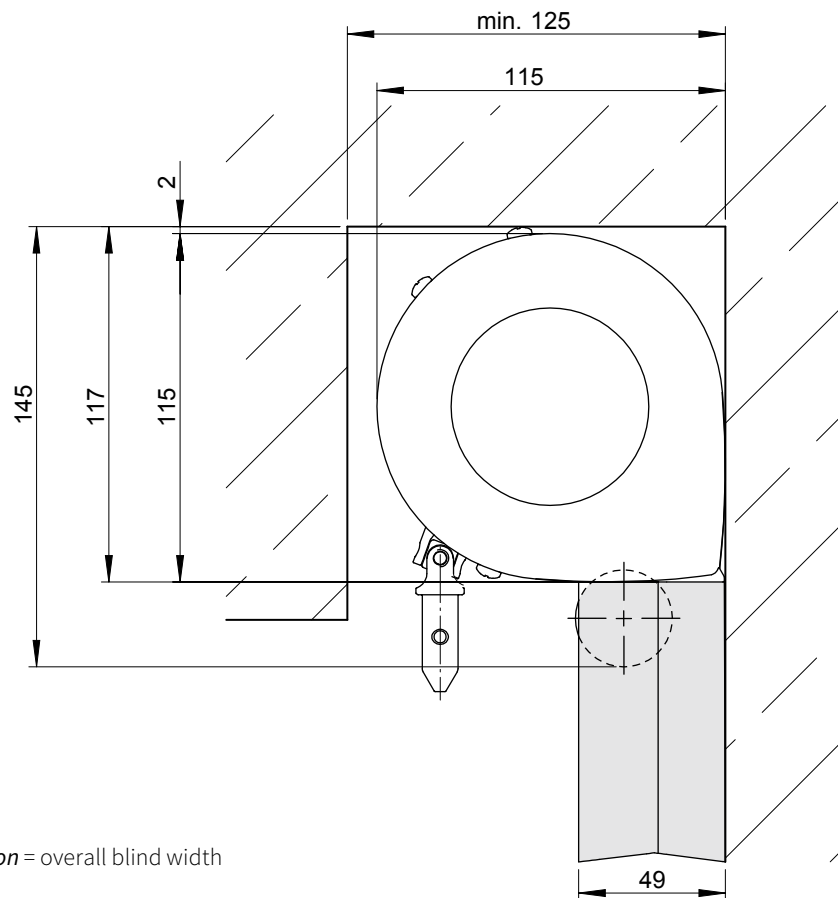
dimensions in mm

# markilux 820

Reveal fixture, gearbox / motor operation



Reveal fixture in a window well, gearbox operation



- M = *order dimension* = overall blind width
- NB = reveal width
- TB = cover width

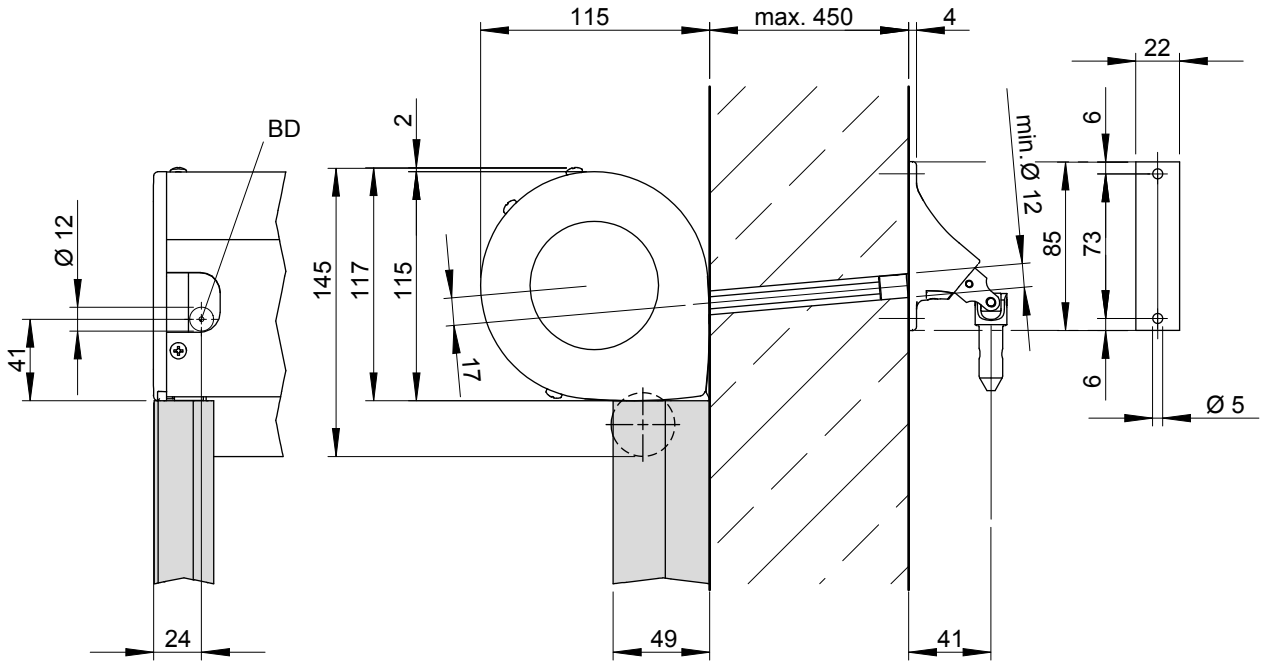
dimensions in mm

01  
02  
03  
04  
05  
06  
07  
**08**  
09  
10  
11  
12  
13  
14  
15  
16  
17  
18  
19  
20

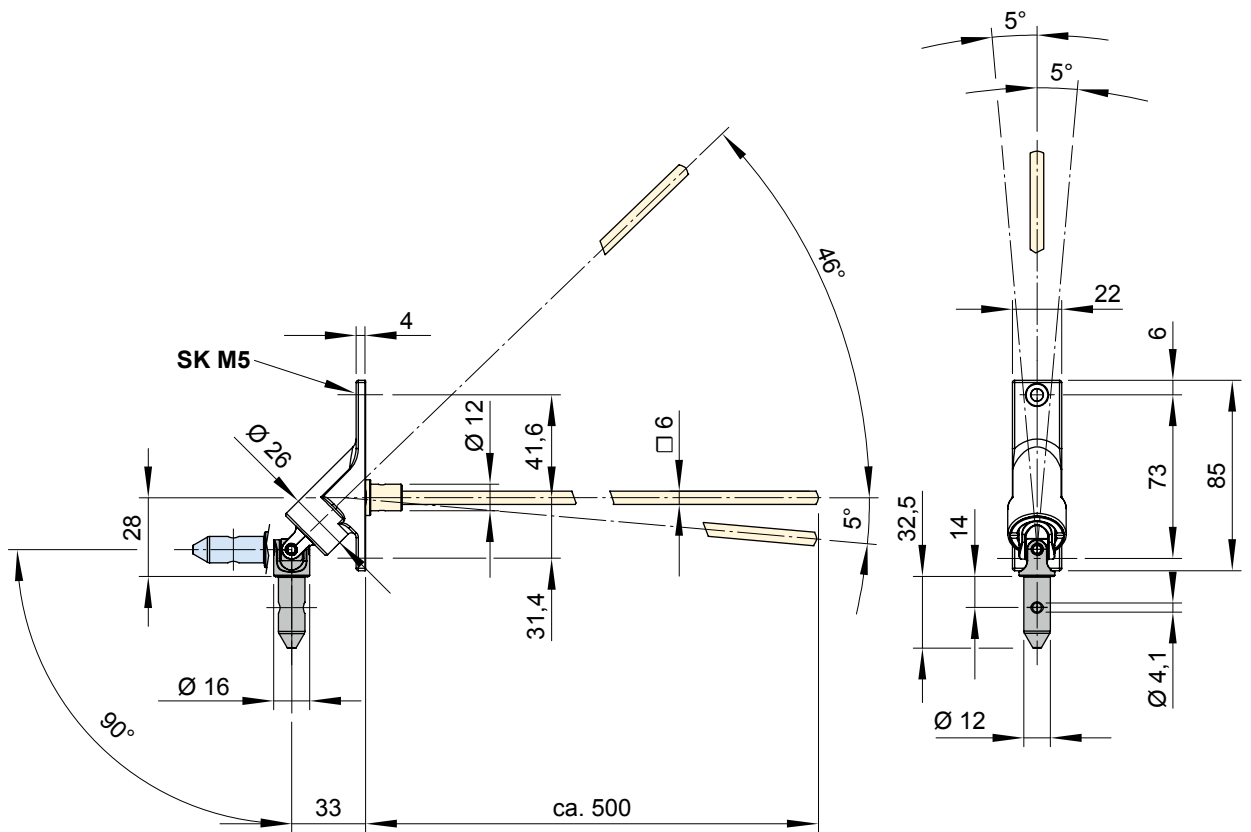
01  
02  
03  
04  
05  
06  
07  
08  
09  
10  
11  
12  
13  
14  
15  
16  
17  
18  
19  
20

# markilux 820

Face fixture, interior operation



Handle for interior operation

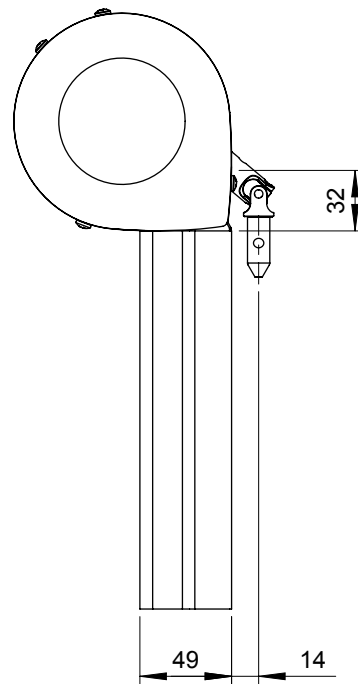
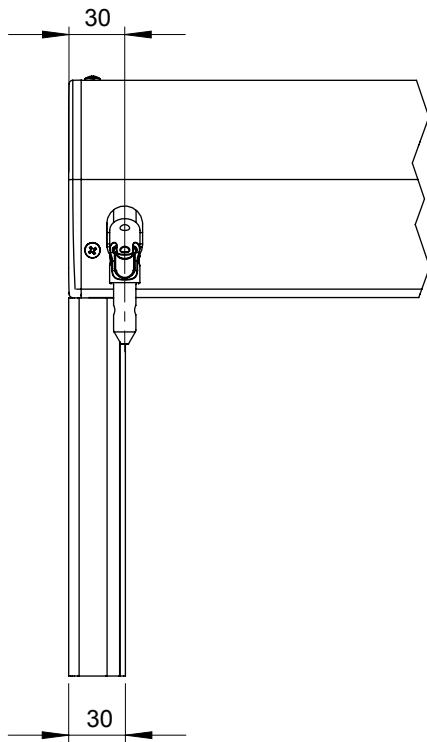


BD = horizontal drill hole  
SK = chase out depth

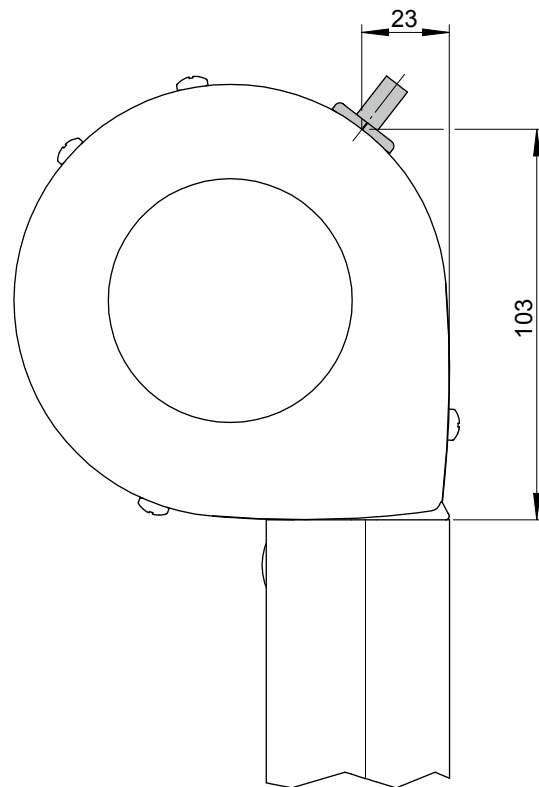
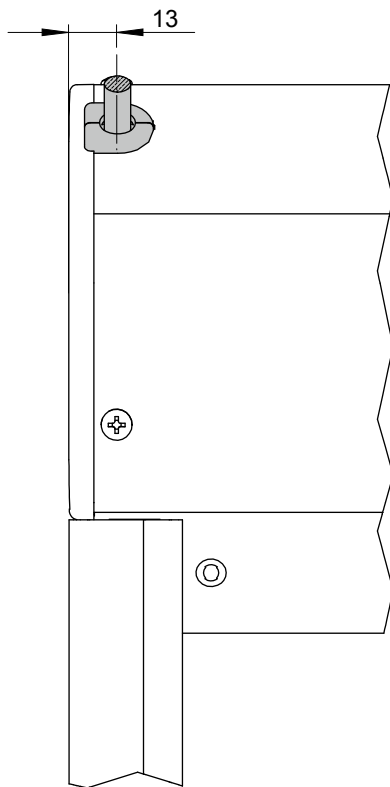
dimensions in mm

# markilux 820

Manual operation from the rear



Motor cable exit point



dimensions in mm

- 01
- 02
- 03
- 04
- 05
- 06
- 07
- 08**
- 09
- 10
- 11
- 12
- 13
- 14
- 15
- 16
- 17
- 18
- 19
- 20

01

02

03

04

05

06

07

**08**

09

10

11

12

13

14

15

16

17

18

19

20