

# Take the Inside Out with Naturally Beautiful Shading Systems

Designer awnings for conservatories, glass rooms and glass canopies.

***markilux***

safe timeless beautiful







## Cool in the summer, warm in the winter.

Unobstructed views into the garden in a protected environment: Conservatories and covered patios offer the best of the indoors and the outdoors. markilux designer awnings protect conservatories and glass canopies from strong sunlight and high temperatures and allow you to enjoy precious moments without limitation. Installed either on top of or below the glass roof they ensure a comfortable climate and reliable protection from glare. The high-grade textile shading systems from markilux are both elegant and robust. They reliably withstand wind and weather and provide an inviting ambience.

***markilux***

# Award-winning German Design.

**markilux designer awnings “Made in Germany”** As a family business in the 4th generation we have been manufacturing awnings that set the highest of standards for almost 50 years. What makes markilux unique is the combination of designer quality awnings and the weaving of our awning covers all being done under one roof, which is why we are truly “Made in Germany” right down to the last detail. Our originality shows when it comes to making living outdoors even more enticing. We don’t stop at good solutions; we look to improve on these solutions every day. This allows us to offer the best to our customers in every respect – a perfect combination of form and function.

markilux designer awnings are characterised by quality, multi-award-winning designs and innovative technology and turn your favourite spot to relax into something extra special. You can take our word for it with our markilux quality promise.

markilux designer awnings have received a multitude of awards:



## Design Features

A markilux designer awning isn't just any type of awning; it has the perfect combination of form and function. We achieve this through the interaction between our internal development team and external designers. The result: Multi-award-winning designer products for your home.



## Quality

Every detail is important during the production of our designer awnings. High-grade materials and our comprehensive quality management system ensure that each awning will have an extremely long service life. markilux is certified according to the DIN EN ISO 9001 standard and with this we pursue one objective: The satisfaction of our customers.



## Function

markilux combines innovative technologies and smart solutions with high-end products. With the variety of accessories available, you can enhance your markilux designer awning to suit your own requirements. The wide range of operating options guarantees you the highest degree of comfort.



## Service

Our products, combined with the competent advice of our specialists and their professional installation, make the perfect solution. Our network of qualified specialist retailers guarantees you excellent personal service and that there is always someone at hand to answer any questions you may have.





# Create your own customised space to relax in.

**Your home. Your markilux** Would you like to shade your conservatory in a stylish manner? Are you looking for an awning for your glass canopy, which unites impressive functionality and attractive design? Then allow yourself to be inspired by markilux. With a choice from a large variety of models, and more than 250 cover patterns; you can create the markilux model that perfectly meets your requirements from numerous combination possibilities. With lighting modules and infrared heaters, as well as smart control technology you can create a comfortable, ambient space which you can enjoy all year round.



**Perfect solutions** Nothing is impossible. Together with our specialist retailers you will find the perfect solution to any requirement.



**Textile ambience** markilux offers more than 250 timelessly beautiful patterns in the highest quality – the decision is yours.



**Excellent design** markilux has the awning that matches your home both from the outside and the inside.

***markilux***

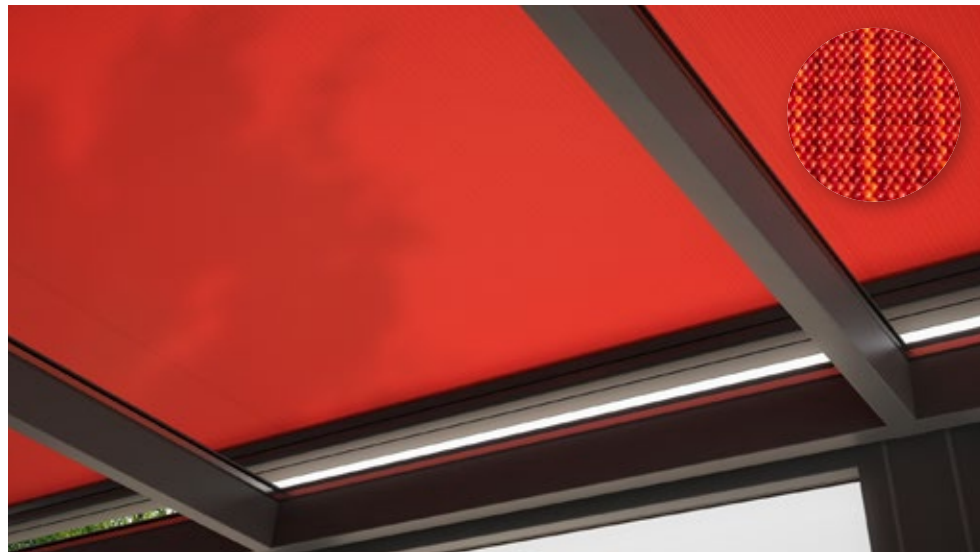




# Market-leading fabrics, woven in house.

**Our unique covers help to create a special ambience for you** The colour and quality of the awning fabric is what helps make the ambience on your patio something special. Depending on the brightness and hue, colour distinction, patterns and textures help create that unique special effect. As a leading manufacturer of high-grade awning covers with almost 100 years of experience in the manufacturing of textiles, markilux offers an unparalleled variety. The markilux textile design team is constantly developing new patterns in line with the latest trends, which are characterised by their timeless nature. Within the 250+ patterns in thematically coordinated colour families, you are certain to find your very own unique fabric.

## visutex



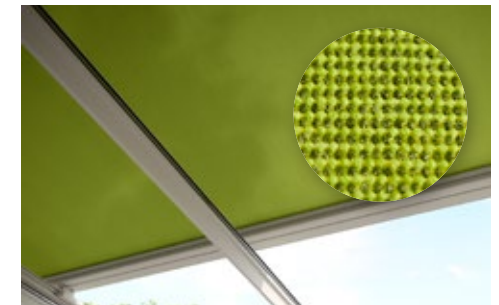
**markilux visutex Collection 50/4/me** Discover the subtle, balanced jaquard effect and powerful colours of the fabrics with this stunningly textured weaving technique. These unique awning fabrics are available exclusively and without any surcharge only from markilux.

## sunsilk



**Brilliant luminosity. Silky smooth surface.** sunsilk awning covers impress with their unique luminosity.

## sunvas



**Soft glow. Textile-like to the touch.** sunvas awning covers score with their textile character and natural appearance.

# Functionality can be so beautiful.

**Awning covers “Made in Germany”** We manufacture awning covers that maintain their shape and colour for years, and offer your home that special something. These high-tech awning fabrics are manufactured at the markilux production facility in Emsdetten, Germany in accordance with strict quality standards. The yarns are dyed using a process we ourselves developed and show their effect in up to 16 million distinctive colours with outstanding luminosity and colour intensity. This has resulted in functional textiles, which have set exceptionally high standards in terms of quality, UV protection, ease of care and appearance. markilux awning covers are available in the qualities “sunsilk” or “sunvas” or as fabrics in our markilux specials collection serving specific requirements.

## Specials collection



**transolair** Solar protection with a view. This sunvas fabric with special perforation technique stands for impressive transparency and good light and air permeability. This effectively reduces the build-up of heat.



**perfortex** Ideal for conservatories. Gaps in the warp, woven into the fabric, make the material permeable to both air and water.



**vuscreen ALU** Solar protection with added functionality. This fabric has been woven with an openness of 3% thus allowing an excellent view outside. The aluminium particles encapsulated in the coating make it particularly effective at reflecting the sun's rays.



**perla** The highly water-repellent sunvas fabric is an effective protection against both sun and rain.



**perla FR** This flame-resistant and highly water-repellent sunsilk fabric complies with strict fire retardancy regulations.



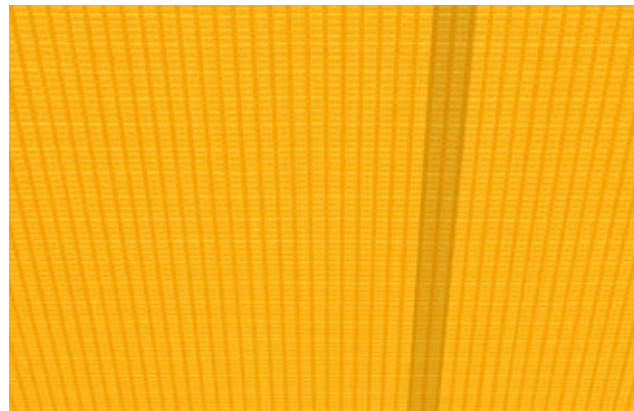
**markilux awning covers** During the production of our awning fabrics we leave nothing to chance. We produce our fabrics sunsilk and sunvas exclusively in Germany using the most modern weaving technology. We add a final finishing flourish to the fabric using our snc coating, a special formula developed in house that creates a self-cleaning effect. This finish gives our awning covers incredible longevity and resistance against rain, light and fluctuations in temperature. This is certified according to Oeko-Tex standard 100, which also guarantees they are free from harmful dyes or chemicals.

With an Ultraviolet Protection Factor (UPF) of 50+, all markilux awning covers made from sunsilk or sunvas offer the highest possible degree of UV protection. This allows you to enjoy sunny days for longer, without risk.\*

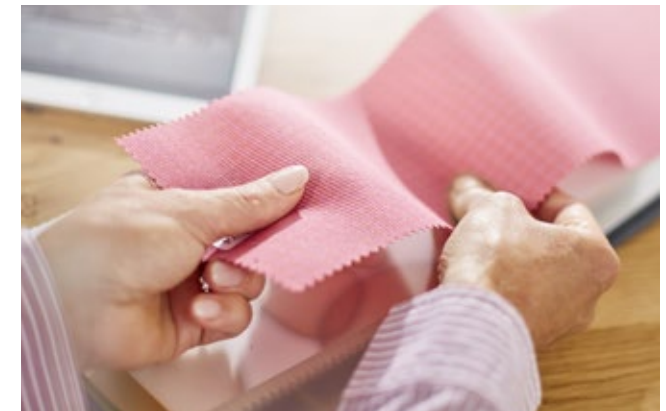
**He who seeks shall find** The most beautiful fabric for your designer awning can be found amongst the 250+ cover patterns at the showroom of your markilux specialist dealer or at [markilux.com](http://markilux.com)



**Self-cleaning snc effect** Water droplets pick up dirt particles and run off the awning cover (the awning must be set at a pitch of at least 14 degrees). This gives you the peace of mind that your fabric will retain its colour and vibrancy for years without you having to lift a finger.



**Bonded awning covers** Panel joints bonded together ultrasonically ensure a consistent, unobtrusive appearance. Its excellent resistance to water, light and fluctuations in temperature ensures that the life expectancy of the cover is extended substantially.



**Light, weather and colour resistance** High-tech yarns dyed right to the core and the high-grade snc finish developed in house guarantee the most stunning shade in which to relax and unwind for many years to come.

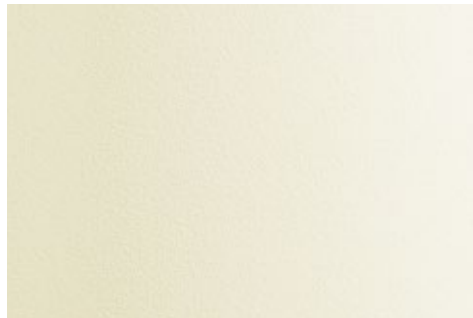
\* Protect your skin with care! Do not spend longer periods outside without applying sun cream. The UPF afforded by the awning applies only to direct sunlight. It offers no protection against reflected sunlight (e.g. from water).

# Turn your imagination into reality with our range of stunning frame colours.

**Choose from our extensive collection of colours** Choose the awning frame colour to complement the colour of the fabric and configure your own amazing design. From a variety of shades of white through to the elegant shades of anthracite, a wide range of colours are available to you. Do you want a particular colour scheme? No problem! We will gladly manufacture your dream awning in your own personal shade. Our high-grade powder coating finish is guaranteed for any awning colour you choose.



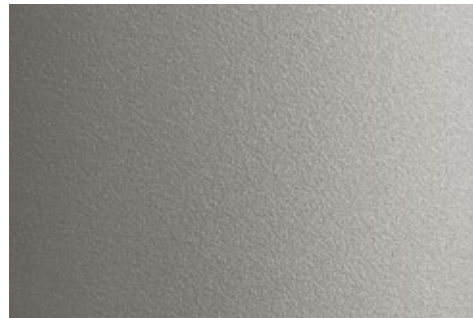
Traffic white RAL 9016



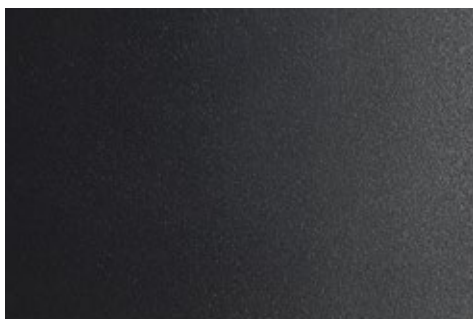
Off-white textured finish 5233



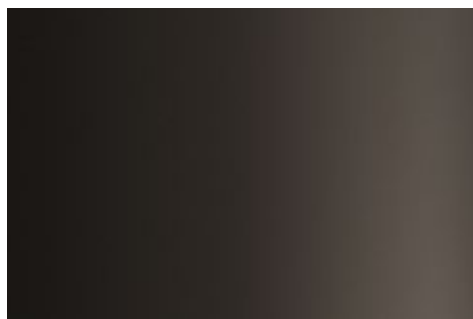
Metallic aluminium RAL 9006



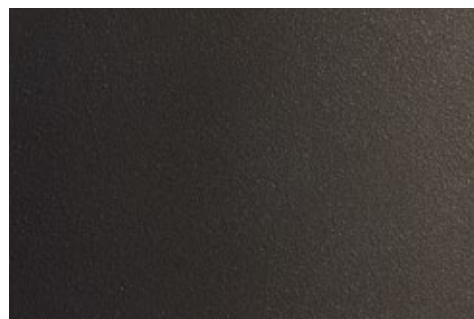
Stone grey metallic 5215



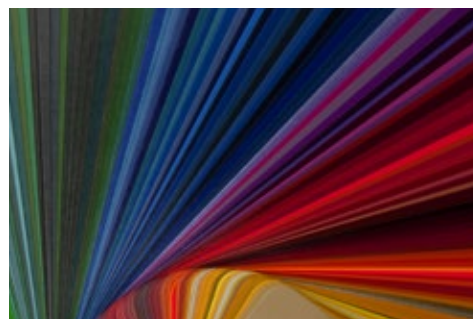
Anthracite metallic 5204



Grey brown RAL 8019



Havana brown textured finish 5229



RAL colour of your choice

© RAL Bonn 2018



# Intelligent solutions designed with functionality.

**Perfect functionality is more than the sum of all the small details** markilux designer awnings are made for problem-free use, even in difficult weather conditions. We are continuously working on the development of new, even better solutions so we can always offer our customers the best possible quality. Without exception, we use materials and technologies that meet the strictest of requirements so you can enjoy your markilux awning for the longest possible time.



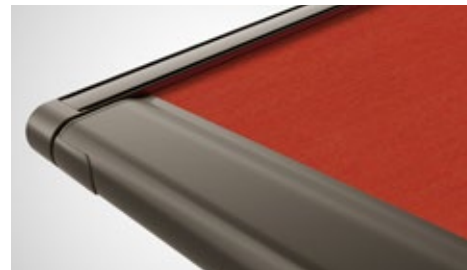
**Coupled unit** An extensive range of brackets allows several units to be installed next to one another – creating XXL shading solutions.



**Compact square fully closed cassette**  
For those of you who prefer a clean design.



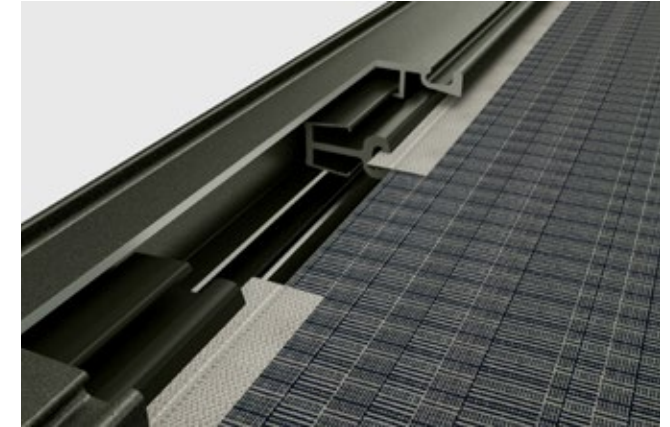
**Elegant round fully closed cassette**  
For those who love flowing lines.



**Flush front profile** Completely extended it finishes flush with the guide tracks.



**Decorative covers and profiles for guide tracks**  
Optionally complement the design, depending on the model.



**markilux tracfix** One of the many sophisticated features markilux offers: lateral cover guidance with no gap between the awning cover and guide track. For a more beautiful overall appearance and better wind stability.

**Perfect cover fit** High cover tension is achieved by two special gas-pistons operating independently in the front profile.





# Touch-button or automatic operation. So easy.

**Ease of operation that meets the highest demands and any weather conditions** The choice is yours: manual operation (spring-assisted on request), hard-wired motor or radio-controlled motor with remote control, are all possible on most models. You can even operate the system while you are away via smartphone or tablet. Better yet, why not put your feet up and add sun, wind and rain sensors to provide automatic intelligent control of your markilux designer awning or blind? Your markilux specialist dealer is at your disposal should you have any queries regarding how you can operate your markilux with the greatest of ease and will provide you with details on how you can connect several individual units and operate them with only one touch of a button.



**Home automation** Easily control your vertical blinds via smartphone or tablet – even when you are away from home. The smart control function with io technology via the app makes it possible.



**Intelligent control** With sun, wind and rain sensors, your markilux system can react to any changes in the weather. In sunny conditions the vertical blinds will extend automatically and in wind and rain they will retract.



**markilux radio-controlled motor** Perfect protection from the sun, inquisitive glances and glare comfortably at the touch of a button.

**markilux 870 / 879** Whether installed above the glass surface of your conservatory (870) or as an underglass awning (879) for your glass canopy – discover the broad range of possibilities.

# Models and options





# Your very own comfortably cool conservatory.

**markilux 8800** Excellent solar protection for up to 36 m<sup>2</sup> with only one cover. Even larger glass surfaces can easily be shaded with a coupled unit.

**Conservatory glass top awnings** Enjoy life in the conservatory even on the hottest of days. Your markilux awning fitted above the glass reflects glaring sunlight; ultraviolet light as well as heat radiation and at the same time immerses your conservatory in natural daylight. The heat remains outside while you can properly enjoy being inside. Whether small or large glass areas, classic or hipped roofs – enjoy comfortable temperatures, spare yourself the cost of having to switch on an AC unit and create your very own dream conservatory.



**Excellent design** Elegant and functional. The fully closed cassettes of the markilux 8800 and 8850 protect the cover in wind and weather.

**Perfect for hipped roofs** The lateral guide tracks of the markilux 8850 can be indented by up to 100cm.







reddot design award  
winner 2017



GERMAN  
DESIGN  
AWARD  
NOMINEE  
2018



**markilux 870** Shade up to 400 cm x 400 cm in a stylish manner and enjoy the comfort and quality of markilux for many years.

**markilux 770** Both this square awning for installation on top of a glass surface and its round counterpart the markilux 870, are very quiet. Noise-reducing closing guides ensure the awning retracts quietly.



**Square. Practical. Unobtrusive.** Exceptionally compact at only 125 x 125 mm the square full cassette of the markilux 770 completely protects the awning cover.



**A round matter** With a diameter of 130 mm, the cassette of the markilux 870 harmoniously nestles against the conservatory and provides all-round protection to the retracted cover.

# The perfect accessory for your glass canopy.

**markilux 879** The round counterpart to the markilux 779 for all who prefer flowing, softer shapes.

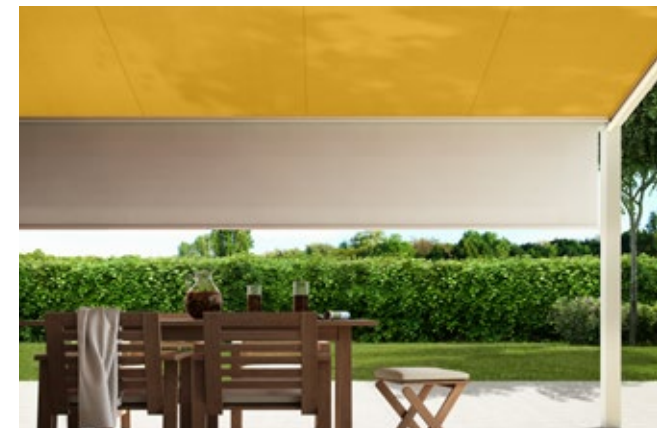
**Underglass awnings for glass canopies** Spend the day outside in your own garden below a markilux designer awning that promises the best protection from too much sun, and helps create your very own cosy outdoor area. The cover is extended underneath the glass canopy so it is protected from dirt, wind and weather. All markilux underglass awnings impress with their compact enclosed cassettes that blend harmoniously into the glass canopy. A variety of lighting options are available to allow you to perfect the ambience in the evening. Discover the options available on page 26.



reddot design award  
winner 2017



GERMAN  
DESIGN  
AWARD  
NOMINEE  
2018



**Shadeplus for the markilux 779 / 879** The ideal addition to the shading options for glass canopies – completely in line with the clear design approach of markilux “Made in Germany”, it is integrated into the front profile of the underglass awning.

**markilux 779** The sturdy, angular full cassette underglass awning with a wide range of lighting options to create your feel-good corner to relax in. Up to 600 cm wide with an extension of 450 cm or 400 cm wide with an extension of 600 cm.





# Let there be light.

## Optional LED lighting for the underglass awnings markilux 779 and 879



**LED spotlights fitted to the cover support tube** Put your favourite spot skilfully in the limelight and enjoy the evening in a pleasantly lit atmosphere. They can be dimmed and pivoted. With the markilux 779, they can also be mounted to the cassette.



**LED line in guide tracks and cover support tube** Energy efficient, stylish and, like all markilux lighting modules, comfortably dimmable by means of remote control.



**Discreet cable conduit** markilux designer awning with attention to detail: The cables in all lighting options are discreetly hidden and masked in a sleek stylish manner.

**Pleasant, light-filled atmosphere** Does your day at home only really start in the evening? If so, enjoy using your patio then with one of the markilux lighting options that give a cozy, pleasantly lit atmosphere.



# Round off your outdoor living area with a touch of light and warmth.

markilux extras for conservatories and glass canopies.



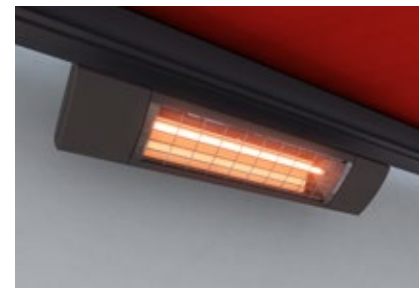
**markilux panoramic windows** Would you like to be able to sit outside below your glass canopy protected from the wind and rain, but still be able to enjoy the view outside? For the vertical cassette blinds markilux 776 and 876 with tracfix, we offer you the markilux panoramic window. Max. awning dimensions 600 cm x 300 cm. Max. height of the panoramic window approx. 135 cm.



**Side screen markilux 790** Protects against low-lying sun and wind from the side, as well as stopping prying eyes. Height max. 250 cm. Extension max. 450 cm.



**markilux Shadeplus** The ideal addition to the shading options for glass canopies, integrated into the front profile of the markilux 779 / 879.



**markilux infrared heater** Feel the warmth in an instant and enjoy the evening outside for even longer. In a protected housing. Energy efficient and with a long service life. In 2000 Watt and 2500 Watt versions, dimmable in three steps.



**markilux LED Spotline** Turn night into day. The elegant light bar in a powder-coated aluminium housing, that can be fitted almost anywhere. The LED spotlights can be tilted and swivelled. Available in two sizes: 180 cm with 3 spotlights and 300 cm with 5 spotlights.

**Vertical designer blinds for conservatories and glass canopies** Simply mask out glances and low-lying sun. Sit protected from the wind and rain. Enjoy the warmth of the day for longer. Adding vertical designer blinds from markilux make your outdoor room perfect – and more private.

**Design your very own outdoors** markilux offers the best in outdoor living comfort. Your markilux specialist dealer will competently provide you with details about the options available to you or alternatively simply go to [markilux.com](https://www.markilux.com)



## Conservatory awnings for installation on top of the glass

markilux 8800



markilux 8850



markilux 770



markilux 870



<b>Max. width × projection</b>	<b>700 × 450 cm / 500 × 700 cm</b> 600 × 450 cm / 500 × 600 cm (tracfix)	<b>650 × 400 cm</b> 500 × 500 cm	<b>400 × 400 cm</b>	<b>400 × 400 cm (tracfix)</b>
<b>Cassette dimensions</b>	<b>Ø 187 mm</b>	<b>Ø 187 mm</b>	<b>125 × 125 mm</b>	<b>Ø 130 mm</b>
<b>Operation type</b> optional	<b>Hard-wired motor</b> radio-controlled motor* silentec motor	<b>Hard-wired motor</b> radio-controlled motor*	<b>Hard-wired motor</b> radio-controlled motor*	<b>Hard-wired motor</b> radio-controlled motor*
<b>Cover guidance system</b> optional	<b>Guide tracks</b> tracfix	<b>Guide tracks</b>	<b>Guide tracks (tracfix)</b>	<b>Guide tracks (tracfix)</b>
<b>Cover tension</b>	<b>Gas pistons</b>	<b>Gas pistons</b>	<b>Gas pistons</b>	<b>Gas pistons</b>
<b>Wind resistance class</b> Beaufort force / wind speed	<b>3</b> 6 → 38 – 48 km/h 6 → 24 – 30 mph	<b>2</b> 5 → 28 – 37 km/h 5 → 17 – 23 mph	<b>3</b> 6 → 38 – 48 km/h 6 → 24 – 30 mph	<b>3</b> 6 → 38 – 48 km/h 6 → 24 – 30 mph
<b>Options **</b>	tracfix coupled unit			

## Underglass awnings for glass canopies

### markilux 779



600 × 450 cm / 400 × 600 cm 600 × 400 cm (tracfix)	600 × 450 cm / 400 × 600 cm 600 × 400 cm (tracfix)
125 × 125 mm	Ø 130 mm
<b>Manual operation</b> hard-wired motor radio-controlled motor*	<b>Manual operation</b> hard-wired motor radio-controlled motor*
<b>Guide tracks</b> tracfix	<b>Guide tracks</b> tracfix
<b>Gas pistons</b>	<b>Gas pistons</b>
2 – 3 depending on size / 3 with tracfix 5 – 6 → 28 – 48 km/h 5 – 6 → 17 – 30 mph	2 – 3 depending on size / 3 with tracfix 5 – 6 → 28 – 48 km/h 5 – 6 → 17 – 30 mph
LED spotlights on the cassette and / or on the cover support tube	LED spotlights on the cover support tube
LED line in the guide tracks and / or in the cover support tube	LED line in the guide tracks and / or in the cover support tube
tracfix	tracfix
shadeplus / drop valance	shadeplus / drop valance

### markilux 879



**markilux**

Ideas, detailed information, professional advice and all exquisite markilux awning cover patterns can be found in your specialist dealer's showroom and at [markilux.com](http://markilux.com)

[markilux.com](http://markilux.com)

***markilux***  
safe timeless beautiful